

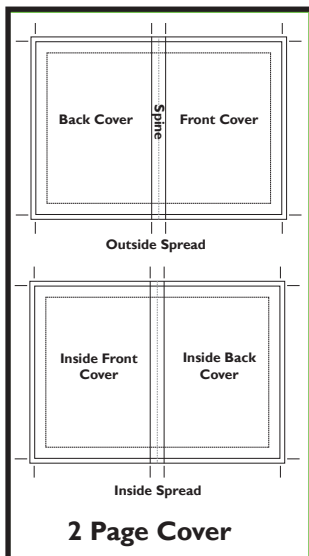
Files submitted for the Select Electronic Warehouse (SEW) must conform to certain specifications in order to process successfully.

Following is an outline of the specifications required. **Files submitted using alternate specifications may require manipulation which will incur additional cost per submission.**

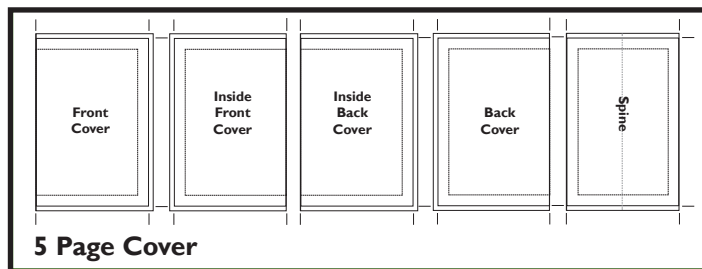
## Cover File Submission Specifications

The cover file must be submitted as a PDF and will be translated to PDF/ X1-a format. All incoming RGB or alternate color spaces will be converted to CMYK and incoming profiles will be ignored. Spot colors will be retained for covers only and will use HP IndiChrome color space.

- **HARDBOUND COVERS** must be delivered as a spread layout. *(See Page 3 for layout instructions)*
- **SOFTBOUND COVERS** should be delivered as one of the two following page layouts.  
If the inside covers are not blank, you must provide the inside covers in the same PDF file as the outside covers.



- Cover spreads should be delivered landscape (not portrait) with trim boxes set to the same height trim measurement as the text file. The width of a spread trim box must be set to 2X the final page trim size plus the spine width required for the final digital stock required. Cover spine width can be determined by referencing the spine bulk calculators online. *(See Page 3 for the Perfect Bind Cover and Case Cover Spine Bulk Calculator links)*
- The cover file (spreads or single covers) must contain trim boxes in the PDF set to the final print trim size and should be centered on the page. The media box must be a minimum of .125" larger than the trim box if bleed is involved. *(See Page 2 for PDF box explanations)*



- All content that does not bleed on any cover must sit .25" from trim. This ensures nothing is trimmed off at bindery stage.
- The cover file can (but not required) be delivered with the name including \_COV.pdf.  
For example: **ACROV2N3\_COV.pdf**

## File Submission Specifications

A text file must be submitted as a single combined PDF of all internal text pages. The file will be translated to PDF/ X1-a format. All incoming RGB or alternate color spaces will be converted to CMYK and incoming profiles will be ignored.

- Blank pages that are used within the text should be placed in the text PDF when supplied.
- All content that does not bleed on a page must sit .25" from trim. This ensures nothing is trimmed off at bindery stage.
- Text pages files must have trim boxes in the PDF set to the final print trim size and should be centered on the page. The media box suggested to be a minimum of .125" larger than the trim box, if bleed is involved.
- The text file can (not required) be delivered with the name including \_TEXT.pdf. For example: **ACROV2N3\_TEXT.pdf**

### Specification Compliance

The Select team is happy to work with you to attain file compliance to these specifications. If you have any questions concerning these specifications please feel free to contact us at [Select.SalesRequest@sheridan.com](mailto:Select.SalesRequest@sheridan.com).

## PDF Boxes Information

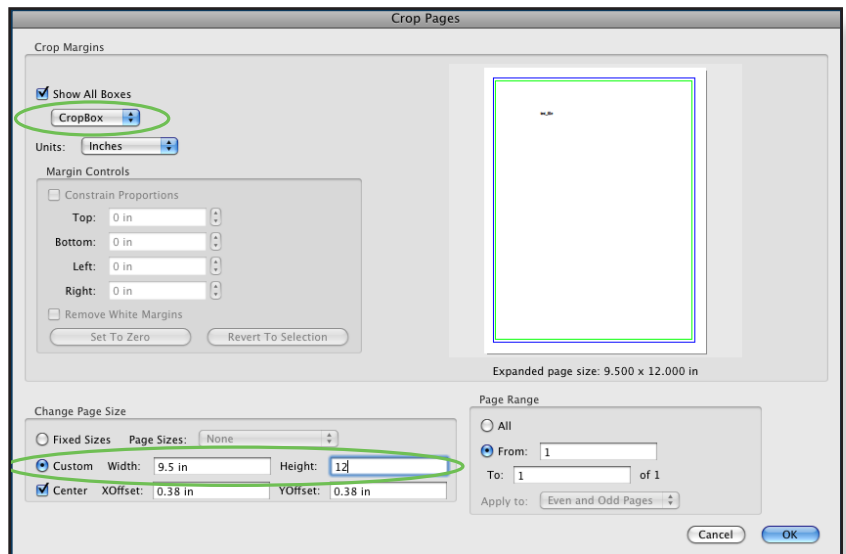
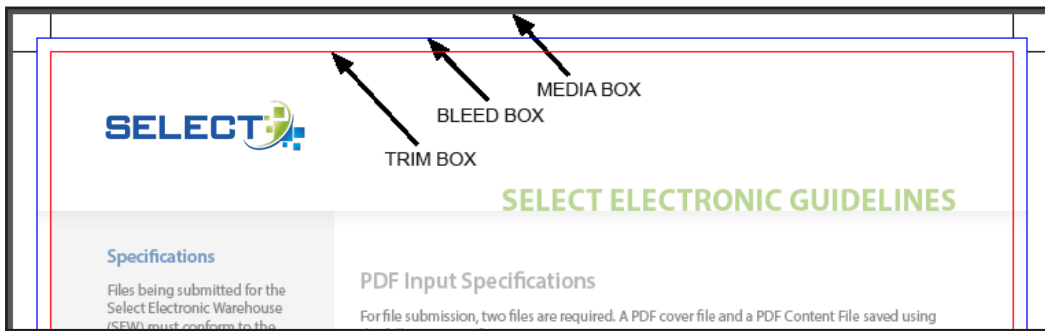
All PDFs contain boxes.

These boxes define how the PDF is processed depending on the front-end software being used by the printer.

Our process reads off the trim box. However, when bleed is involved and the media box is assigned to the trim box, our software can not see past the media box to allow the bleed to print. Therefore, the media box needs to be assigned BIGGER than the trim box.

Newer versions of applications will take care of this when you export to PDF with bleed turned on.

This can also be done by using the Crop Tool in Acrobat 8 or higher. Change the Crop Box to approximately 1 inch bigger than the trim of the book. This sample would be for an 8.5x11 inch trim size.



## Spine Bulk Calculators

Click on the thumbnail or the URL to be directed to the interactive calculator

## Case Cover Calculator

<http://extranet.sheridan.com/calculators/CaseBind/CaseCalc.html>

## Perfect Bind Cover Calculator

<http://extranet.sheridan.com/calculators/PerfectBind/PerfectBindCalc.html>

## 2D Barcode Notification

All books will have a 2D barcode of 13 mm square, positioned 15 mm from the foot and 15 mm from the face of the last page of text. To ensure there is no interference with the book content, 4 blank pages (two leaves of paper) will automatically be added to the back of the book.

*Do not include these pages in your page count when calculating a spine bulk.*