

Sheridan Distiller Configuration

Procedure for configuring Acrobat Distiller v4.05 for Windows OS

rev 10/11/06

Installation:

Copy the Sheridan.joboptions file to the Acrobat Distiller Settings folder in the Program Files folder on your PC hard drive. Typically, the Settings folder is located at:

C:\Program Files\Adobe\Acrobat\Distillr\Settings

Configuration:

1. Launch the Adobe Acrobat Distiller application.
2. Select **Job Options:** > **Sheridan** from the Distiller Job Options drop-down list.

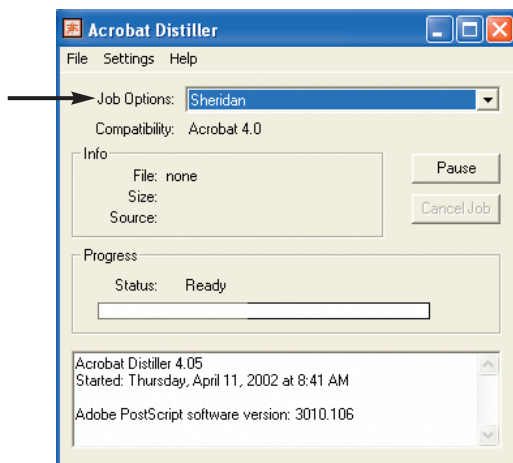


figure 1.

Selecting the Distiller Job Options

- Select **Sheridan** from the Job Options drop-down list.

3. Settings can be confirmed by selecting **Settings** > **Job Options**.

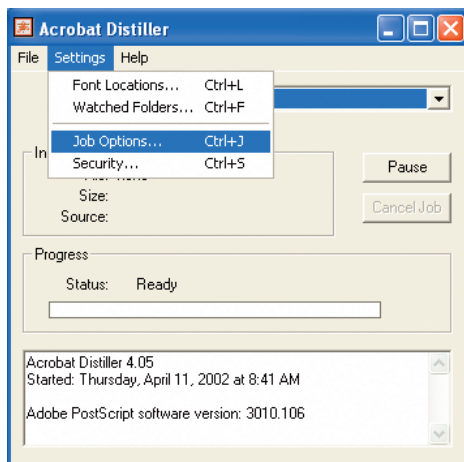


figure 2.

Displaying the Sheridan Job Options Settings

- Select **Settings** > **Job Options** from the Distiller menu.

Sheridan Distiller Configuration

Procedure for configuring Acrobat Distiller v4.05 for Windows OS

rev 10/11/06

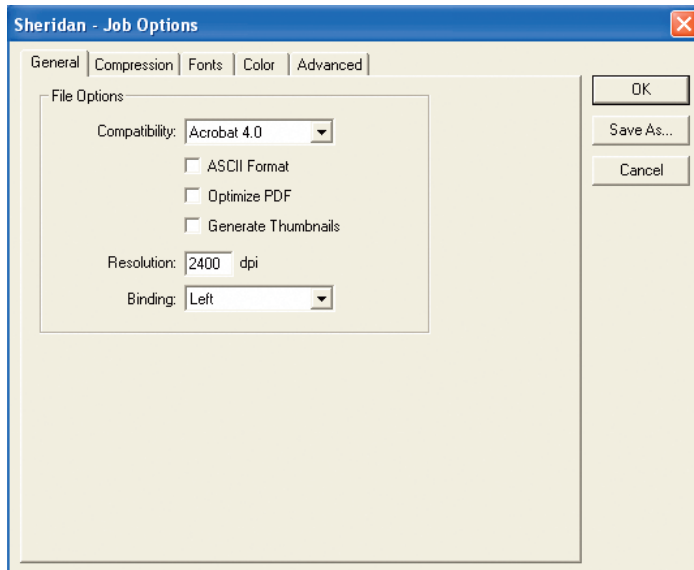


figure 3.

The Job Options General tab

- Select **Acrobat 4.0** Compatibility
- Clear the checkboxes for:
 - ASCII Format
 - Optimize PDF
 - Generate Thumbnails
- Set Resolution to **2400** dpi
- Set Binding to **Left**

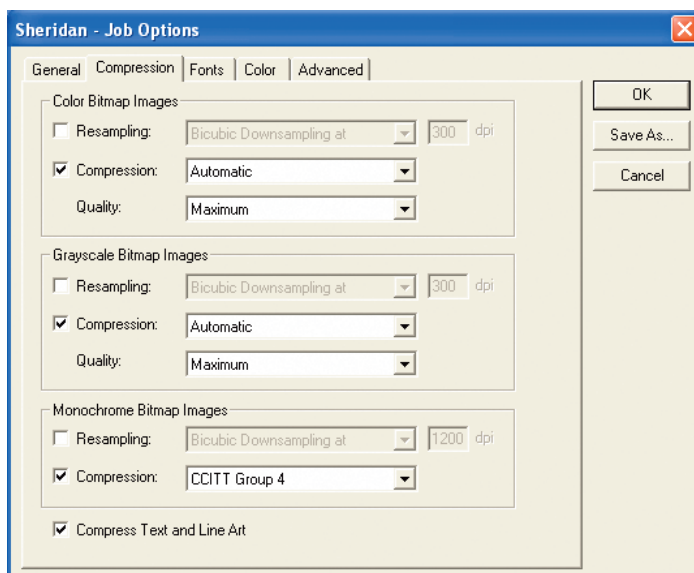


figure 4.

The Job Options Compression tab

- For Color Bitmap Images:
 - Deselect Resampling
 - Select Compression: **Automatic**
 - Select Quality: **Maximum**
- For Grayscale Bitmap Images:
 - Deselect Resampling
 - Select Compression: **Automatic**
 - Select Quality: **Maximum**
- For Monochrome Bitmap Images:
 - Deselect Resampling
 - Select Compression: **CCITT Group 4**
- Select the checkbox for Compress Text and Line Art

Sheridan Distiller Configuration

Procedure for configuring Acrobat Distiller v4.05 for Windows OS

rev 10/11/06

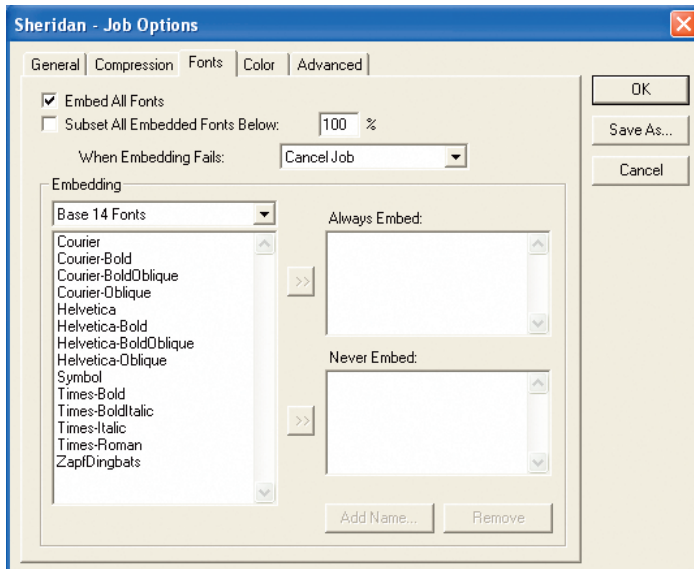


figure 5.

The Job Options Fonts tab

- Select checkboxes for:
Embed All Fonts
- For When Embedding Fails,
Select **Cancel Job** from list
- Clear all font names from the
Always Embed and Never
Embed lists

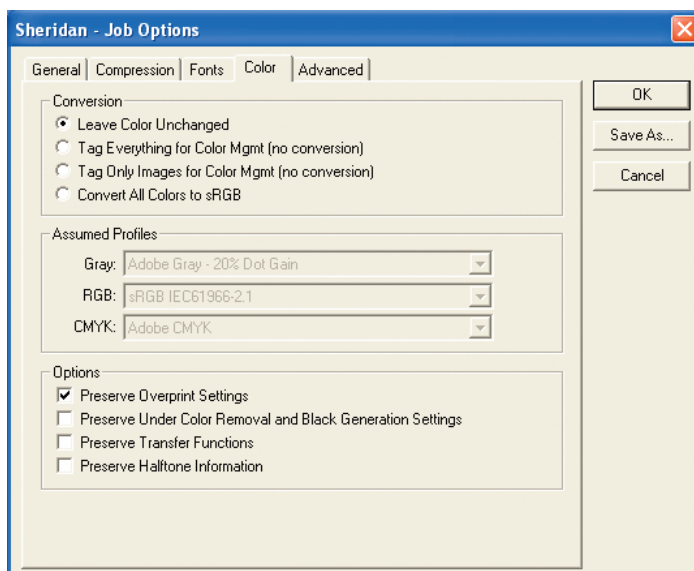


figure 6.

The Job Options Color tab

- For Conversion:
Select the radio button only for:
Leave Color Unchanged
- Assumed Profiles will be grayed
- For Options:
Select the checkbox only for:
Preserve Overprint Settings
- Clear the checkboxes for:
Preserve UCR and Black
Generation
Preserve Transfer Functions
Preserve Halftone Information

Sheridan Distiller Configuration

Procedure for configuring Acrobat Distiller v4.05 for Windows OS

rev 10/11/06

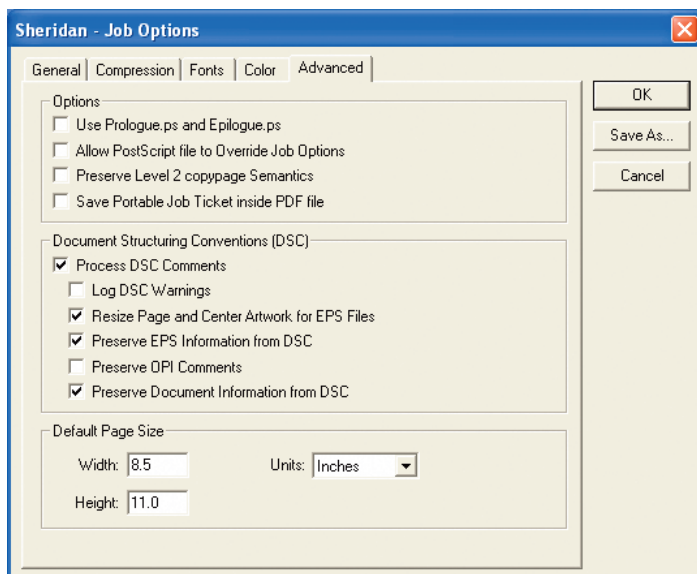


figure 7.

The Job Options Advanced tab

- For Options, clear all checkboxes
- For Document Structuring Conventions (DSC):
Select the checkboxes for:
Process DSC Comments
Resize Page and Center Artwork
Preserve EPS Information
Preserve Document Information
- Clear checkboxes for:
Log DSC Warnings
Preserve OPI Comments
- Set Default Page Size to:
Width: **8.50**
Height: **11.00**
- Select **Inches** from the Units drop-down list

Note: Modify the default page size as needed to match the applicable actual document size.

4. Save the Job Options Settings preferences file.

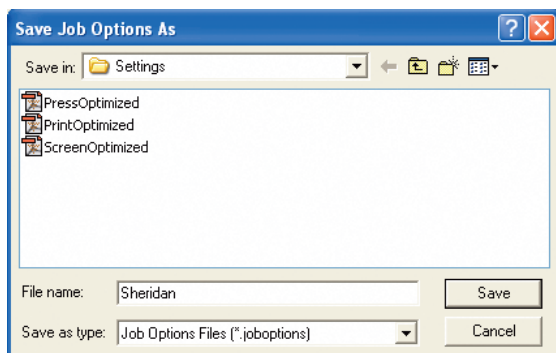


figure 8.

Saving the Job Options preferences

- Select **Save As**
- Name the Job Options file as:
Sheridan

Sheridan Distiller Configuration

Procedure for configuring Acrobat Distiller v4.05 for Windows OS

rev 10/11/06

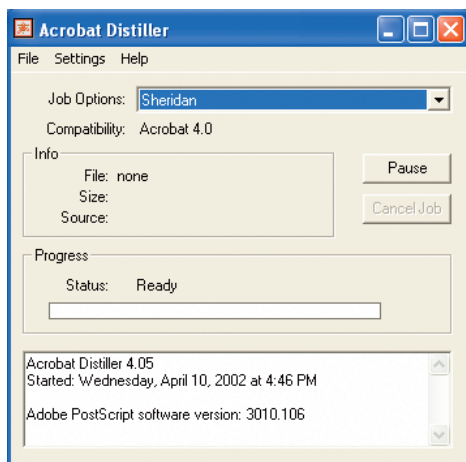


figure 9.

Selecting the Sheridan Job Options

- Select **Sheridan** from the Job Options drop-down list to invoke the Sheridan Distiller Settings for processing a PostScript file to PDF

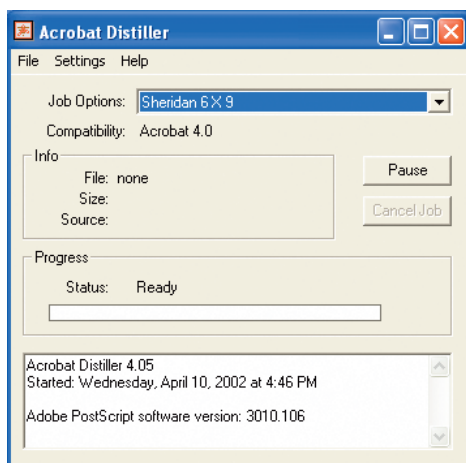


figure 10.

TIP: Saving alternate Job Options

- For varying default page sizes, modify the default page size in the Advanced tab, then save unique Settings files that include the default size in the Job Options file name (e.g., Sheridan 6 X 9)

5. Select **File > Open** and navigate to the PostScript file for which the PDF is to be created or drag the PostScript or EPS file onto the open Distiller window. The PDF file will be created to the same folder within which the originating file is located. Alternatively, the PostScript file can be printed or copied to an Acrobat Distiller watched folder.

The screen images for this document were captured using a PC running Microsoft Windows XP Pro. Although your operating system may be different, and the preceding screen captures may be different in appearance from those displayed on your system, the configuration for Adobe Acrobat Distiller version 4.x will be the same.