

Sheridan Distiller Configuration

Procedure for configuring Acrobat Distiller v5.05 for Windows OS

rev 10/11/06

Installation:

Copy the Sheridan.joboptions file to the Acrobat Distiller Settings folder in the Program Files folder on your PC hard drive. Typically, the Settings folder is located at:

C:\Program Files\Adobe\Acrobat\Distillr\Settings

Configuration:

1. Launch the Adobe Acrobat Distiller application.
2. Select **Job Options:** > **Sheridan** from the Distiller Job Options drop-down list.

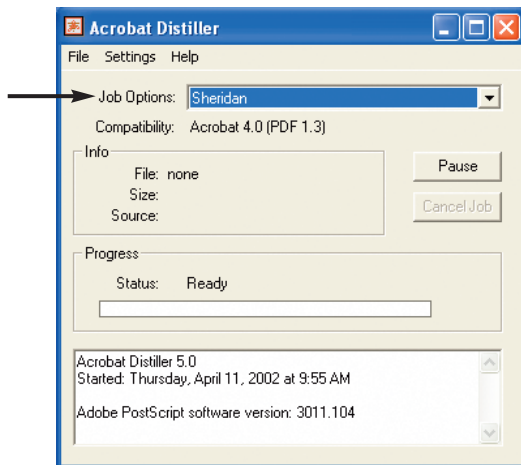


figure 1.

Selecting the Distiller Job Options

- Select **Sheridan** from the Job Options drop-down list.

3. Settings can be confirmed by selecting **Settings** > **Job Options**.

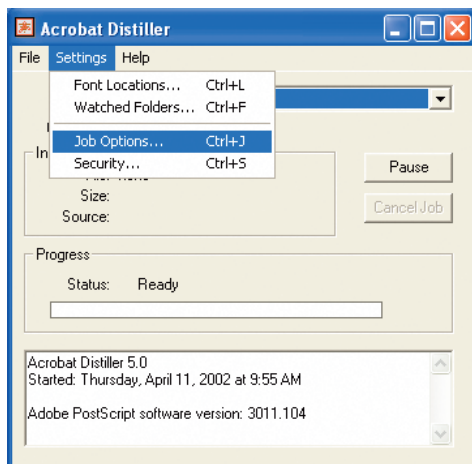


figure 2.

Displaying the Sheridan Job Options Settings

- Select **Settings** > **Job Options** from the Distiller menu.

Sheridan Distiller Configuration

Procedure for configuring Acrobat Distiller v5.05 for Windows OS

rev 10/11/06

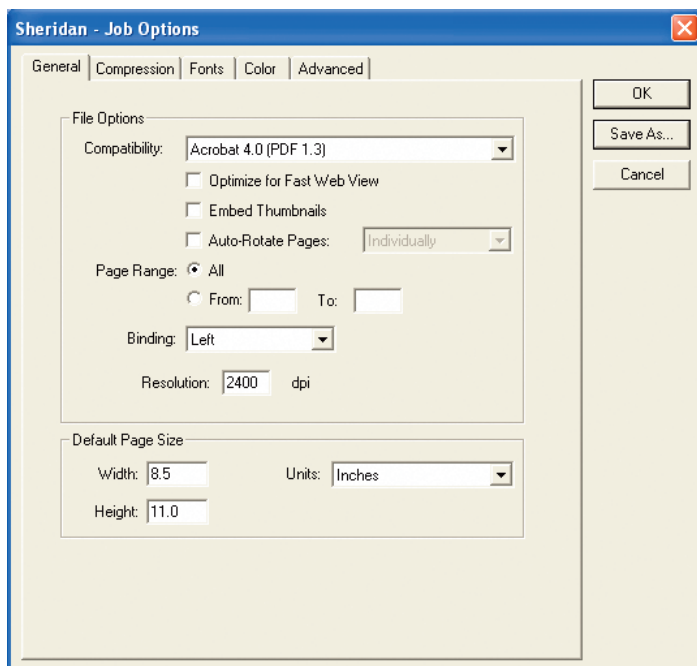


figure 3.

The Job Options General tab

- Select **Acrobat 4.0** Compatibility
- Clear checkboxes for:
Optimize for Fast Web View
Embed Thumbnails
Auto-Rotate Pages
- Select Page Range: **All**
- Set Binding to **Left**
- Set Resolution to **2400** dpi
- Select **Inches** from the Units list
Set Default Page Size to:
Width: **8.5**
Height: **11.0**

Note: Modify the default page size as needed to match the applicable actual document size.

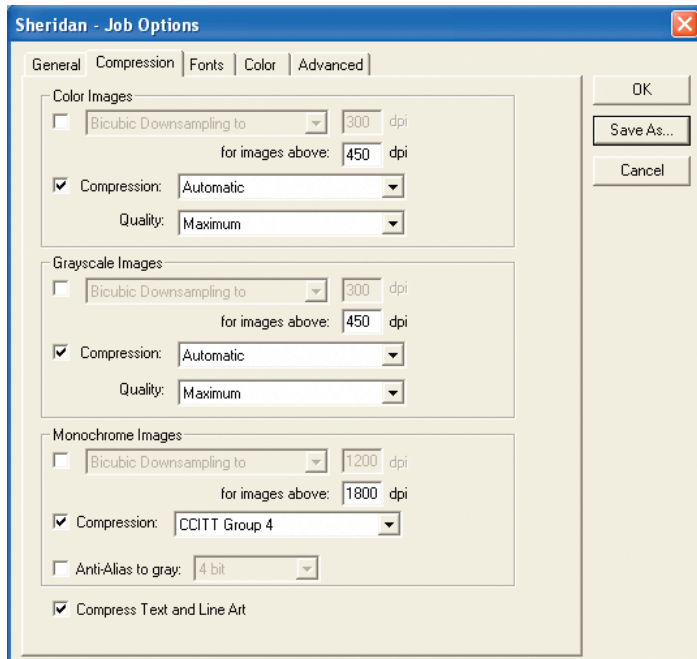


figure 4.

The Job Options Compression tab

- For Color Images:
Deselect Downsampling
Select Compression: **Automatic**
Select Quality: **Maximum**
- For Grayscale Images:
Deselect Downsampling
Select Compression: **Automatic**
Select Quality: **Maximum**
- For Monochrome Images:
Deselect Downsampling
Select Compression:
CCITT Group 4
Deselect Anti-Alias to gray
- Select the checkbox for
Compress Text and Line Art

Sheridan Distiller Configuration

Procedure for configuring Acrobat Distiller v5.05 for Windows OS

rev 10/11/06

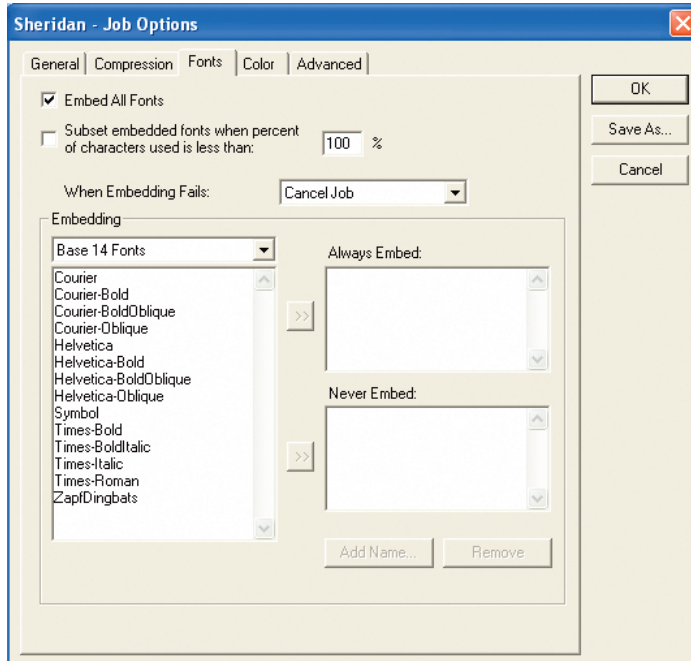


figure 5.

The Job Options Fonts tab

- Select checkboxes for:
Embed All Fonts
- For When Embedding Fails,
Select **Cancel Job** from list
- Clear all font names from the
Always Embed and Never
Embed lists

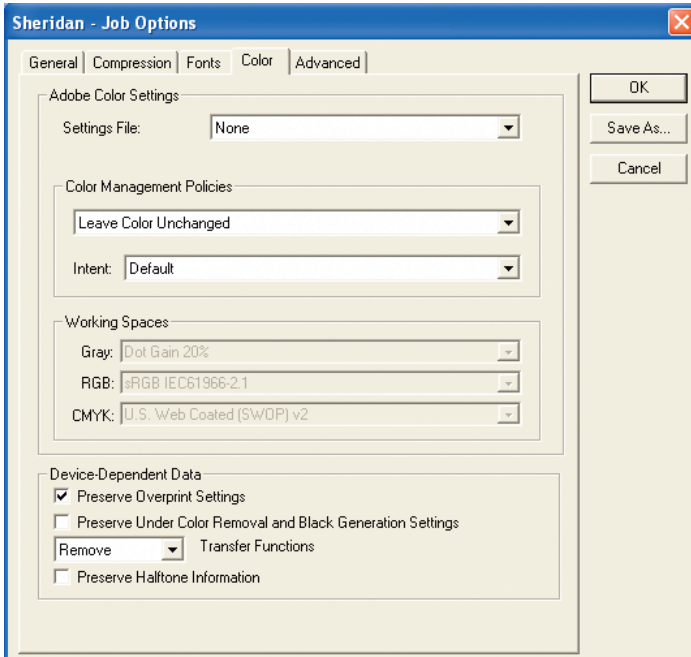


figure 6.

The Job Options Color tab

- Select Settings File: **None**
- For Color Management Policies:
Select: **Leave Color Unchanged**
Select Intent: **Default**
- Working Spaces will be grayed
- For Device-Dependent Data:
Select the checkbox only for:
Preserve Overprint Settings
- Clear the checkboxes for:
Preserve UCR and Black
Generation
Preserve Halftone Information
- Select **Remove** Transfer Functions

Sheridan Distiller Configuration

Procedure for configuring Acrobat Distiller v5.05 for Windows OS

rev 10/11/06

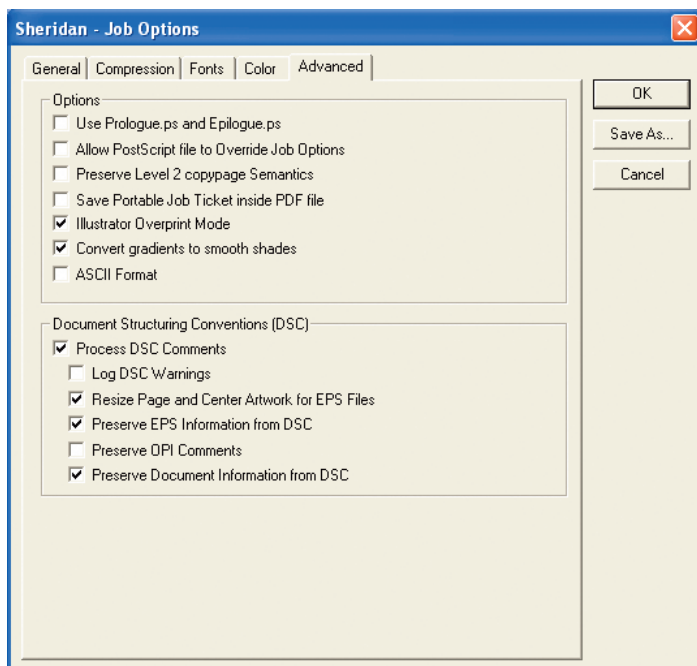


figure 7.

The Job Options Advanced tab

- For Options:
Select the checkboxes for:
Save Portable Job Ticket
Illustrator Overprint Mode
Convert Gradients to Smooth Shades
- Clear all other checkboxes
- For Document Structuring Conventions:
Select the checkboxes for:
Process DSC Comments
Resize Page and Center Artwork
Preserve EPS information
Preserve Document Information
- Clear checkboxes for:
Log DSC Warnings
Preserve OPI Comments

4. Save the Job Options Settings preferences file.

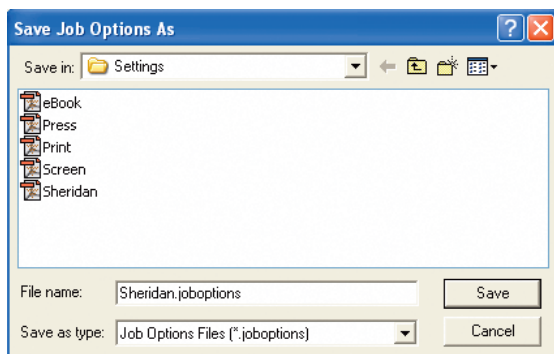


figure 8.

Saving the Job Options preferences

- Select **Save As**
- Name the Job Options file as:
Sheridan
- Select **OK**

Sheridan Distiller Configuration

Procedure for configuring Acrobat Distiller v5.05 for Windows OS

rev 10/11/06

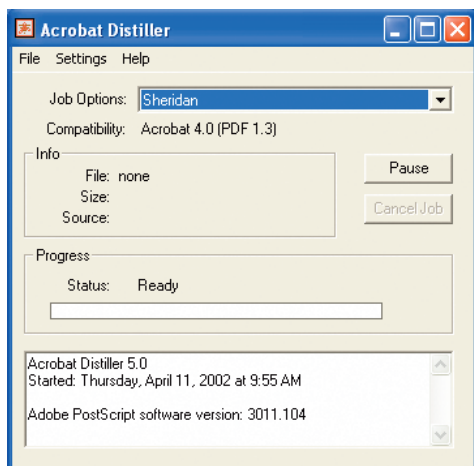


figure 9.

Selecting the Sheridan Job Options

- Select **Sheridan** from the Job Options drop-down list to invoke the Sheridan Distiller Settings for processing a PostScript file to PDF

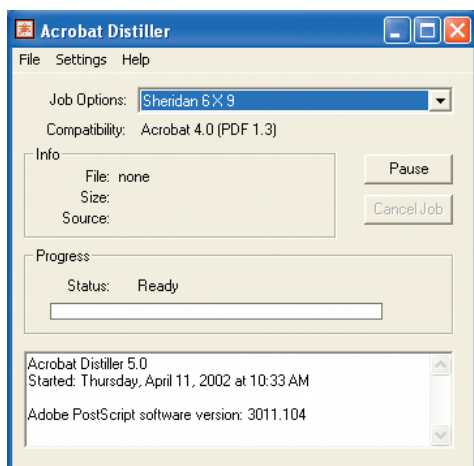


figure 10.

TIP: Saving alternate Job Options

- For varying default page sizes, modify the default page size in the General tab, then save unique Settings files that include the default size in the Job Options file name (e.g., Sheridan 6 X 9)

5. Select **File > Open** and navigate to the PostScript file for which the PDF is to be created or drag the PostScript or EPS file onto the open Distiller window. The PDF file will be created to the same folder within which the originating file is located. Alternatively, the PostScript file can be printed or copied to an Acrobat Distiller watched folder.

The screen images for this document were captured using a PC running Microsoft Windows XP Pro. Although your operating system may be different, and the preceding screen captures may be different in appearance from those displayed on your system, the configuration for Adobe Acrobat Distiller version 5.x will be the same.