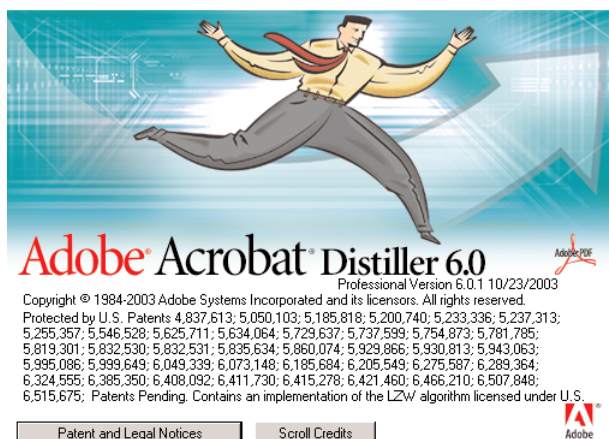


Sheridan Distiller Configuration

Procedure for configuring Acrobat Distiller v6.0 for Windows OS

rev 10/11/06



Preliminary:

Configure Adobe Acrobat Distiller Font Locations: In addition to the default font folder, other local font folders can be monitored by Acrobat Distiller. This helps to ensure PDF font embedding for fonts referred to (but not included) in the PostScript file selected for Distiller conversion, assuming PostScript generation and Distiller conversion will be accomplished from the same workstation, as recommended.

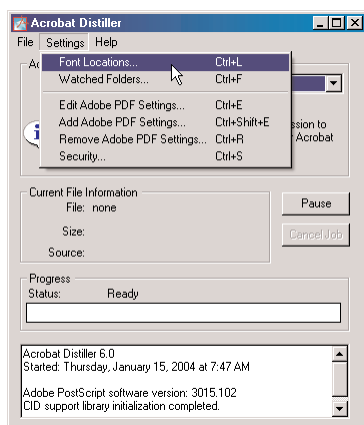


figure 1.

Configuring Distiller Font Locations

- Launch Adobe Acrobat Distiller
- From the Distiller menu, select **Settings > Font Locations...**

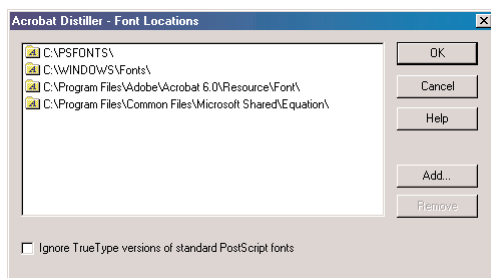


figure 2.

Configuring Distiller Font Locations

- Select **Add...**
- Navigate to each additional local font folder
- Select **OK**

Sheridan Distiller Configuration

Procedure for configuring Acrobat Distiller v6.0 for Windows OS

rev 10/11/06

Installation:

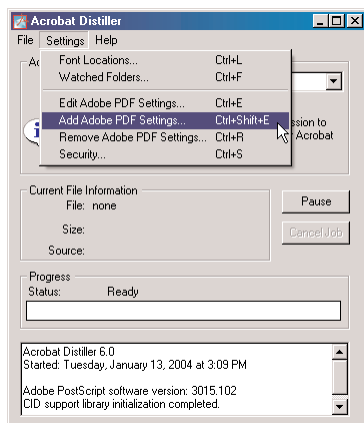


figure 3.

Installing the Sheridan job options file

- From the Distiller menu, select **Settings > Add Adobe PDF Settings...**

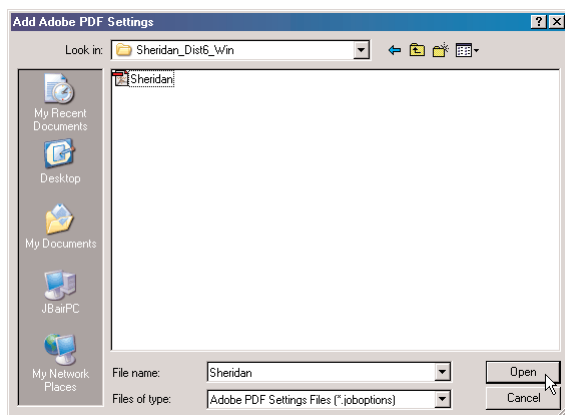


figure 4.

Installing the Sheridan job options file

- Navigate to the Sheridan Adobe PDF Settings File (Sheridan.joboptions) for Acrobat v6.0
- Select **Open**

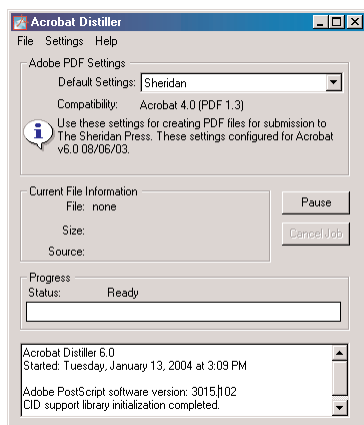


figure 5.

Installing the Sheridan job options file

- From the Adobe PDF Settings Default Settings drop-down list, select **Sheridan**

Select **File > Open** and navigate to the PostScript file to be converted, or drag the PostScript or EPS file onto the open Distiller window. The PDF file will be created to the same folder within which the originating PostScript file is located. Alternatively, the PostScript file can be printed or copied to an Acrobat Distiller watched folder.

Sheridan Distiller Configuration

Procedure for configuring Acrobat Distiller v6.0 for Windows OS

rev 10/11/06

Configuration:

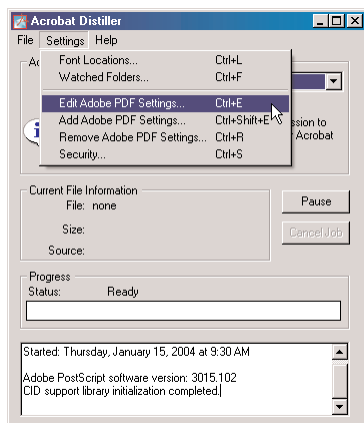


figure 6.

Confirming the Sheridan PDF Settings

- To confirm settings: From the Distiller menu, select **Settings > Edit Adobe PDF Settings...**

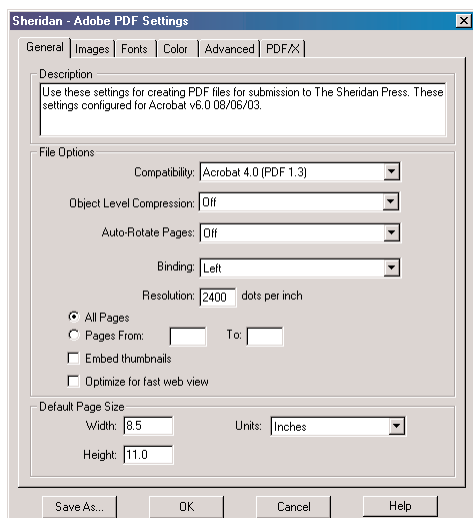


figure 7.

Confirming the Sheridan PDF Settings: General

- Compatibility: **Acrobat 4.0 (PDF 1.3)**
- Object Level Compression: **Off**
- Auto-Rotate Pages: **Off**
- Binding: **Left**
- Resolution: **2400 dots per inch**
- All Pages
- Default Page Size:
 - Width: **8.5**
 - Height: **11.0**
- Units: **Inches**

Note: Modify the default page size as needed to match the applicable actual document size.

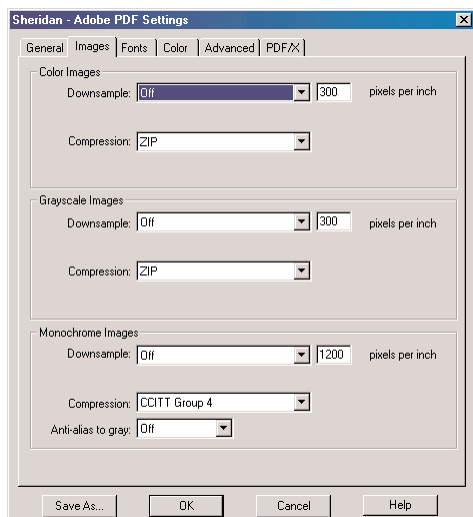


figure 8.

Confirming the Sheridan PDF Settings: Images

Color Images:

- Downsample: **Off**
- Compression: **ZIP**

Grayscale Images:

- Downsample: **Off**
- Compression: **ZIP**

Monochrome Images:

- Downsample: **Off**
- Compression: **CCITT Group 4**
- Anti-alias to gray: **Off**

Sheridan Distiller Configuration

Procedure for configuring Acrobat Distiller v6.0 for Windows OS

rev 10/11/06

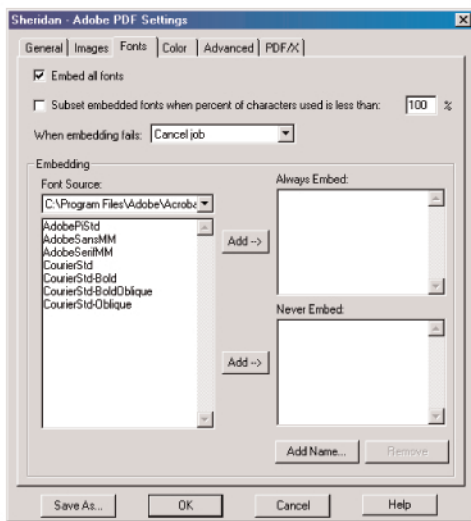


figure 9.

Confirming the Sheridan PDF Settings: Fonts

- **Embed all fonts**
- **When embedding fails: Cancel job**

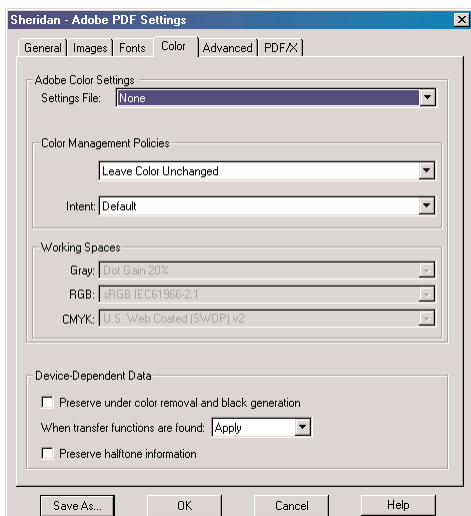


figure 10.

Confirming the Sheridan PDF Settings: Color

- **Settings File: None**
- **Color Management Policies: Leave Color Unchanged**
- **Intent: Default**
- **When transfer functions are found: Apply**

Sheridan Distiller Configuration

Procedure for configuring Acrobat Distiller v6.0 for Windows OS

rev 10/11/06

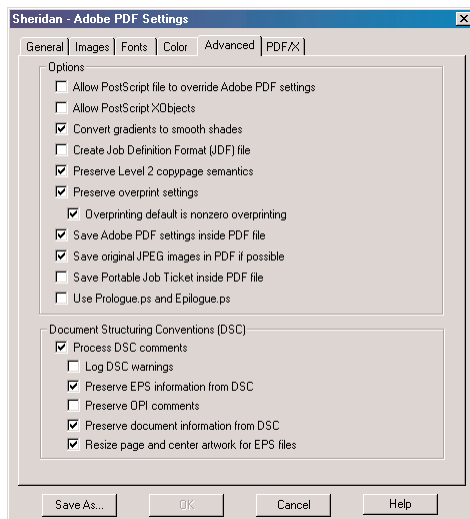


figure 11.

Confirming the Sheridan PDF Settings: Advanced

Options

- Convert gradients to smooth shades
- Preserve Level2 copypage semantics
- Preserve overprint settings
- Overprinting default is nonzero overprinting
- Save Adobe PDF settings inside PDF file
- Save original JPEG images in PDF if possible

Document Structuring Conventions (DSC)

- Process DSC comments
- Preserve EPS information from DSC
- Preserve document information from DSC
- Resize page and center artwork for EPS files

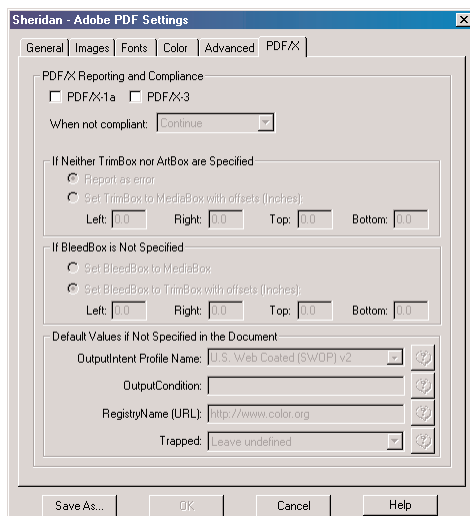


figure 12.

Confirming the Sheridan PDF Settings: PDF/X