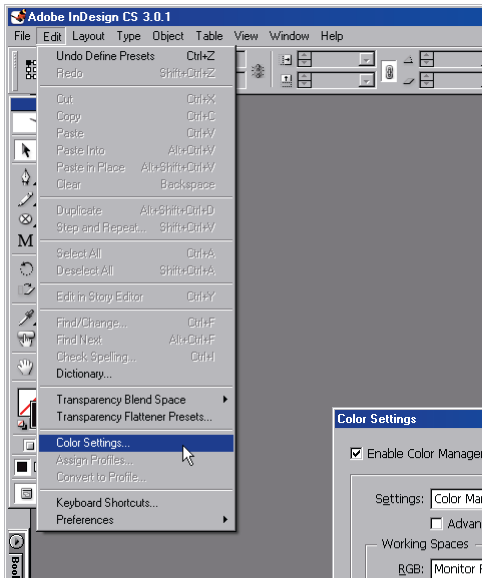


Adobe InDesign CS1 Export Adobe PDF (Windows)

Preliminary configuration:

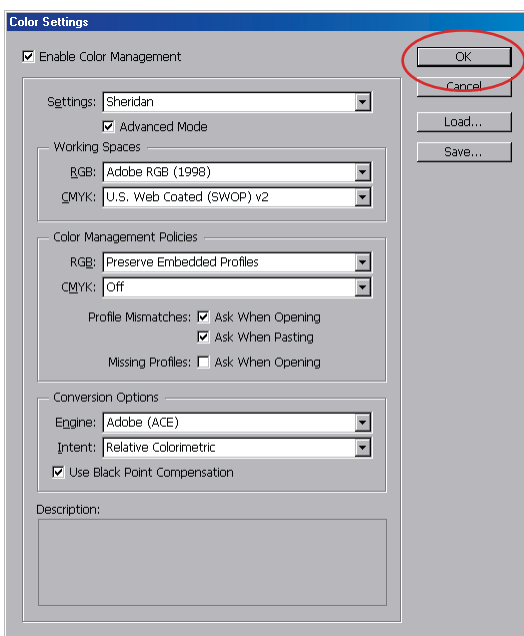
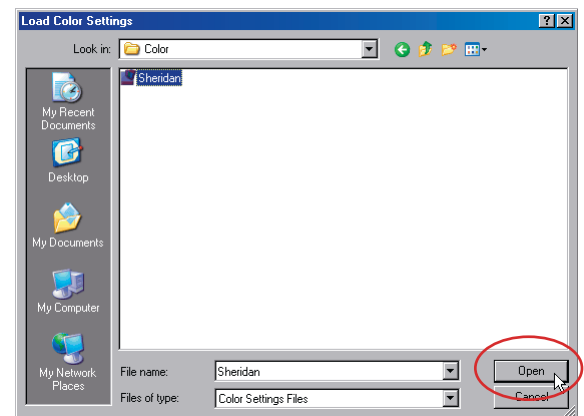
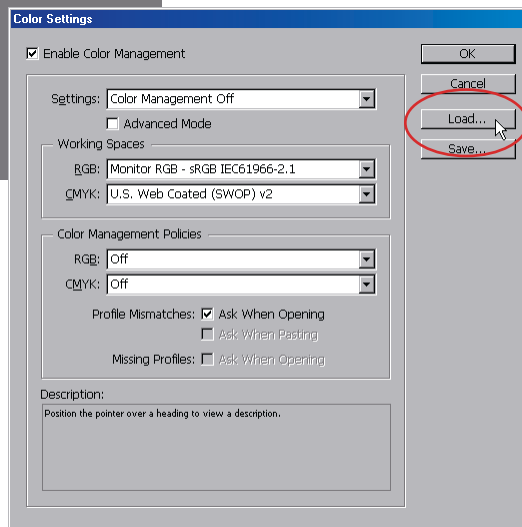


Configure InDesign CS Color Settings:

- Select **Edit > Color Settings**
- Activate the checkbox for **Enable Color Management**
- Select the **Load** button
- Navigate to the folder containing the **Sheridan** Color Settings file*
- Choose the **Sheridan.csf** file and select the **Open** button

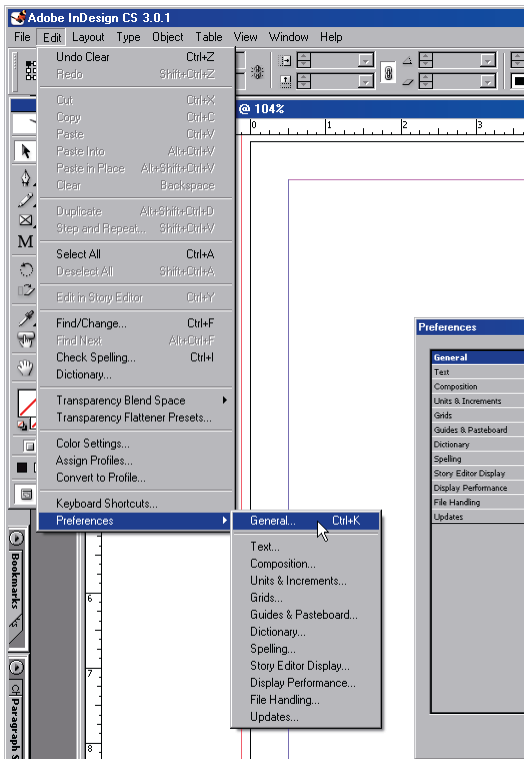
*Alternatively, prior to loading, the Sheridan.csf file may be located to:

C:\Program Files\Common Files\Adobe\Color\Settings



- Select **OK** from the Color Settings dialog window

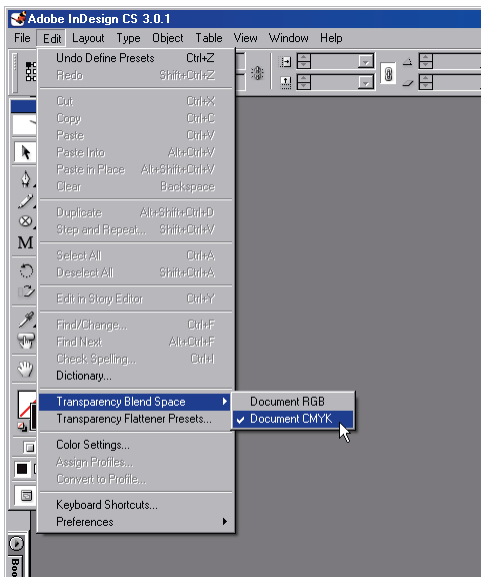
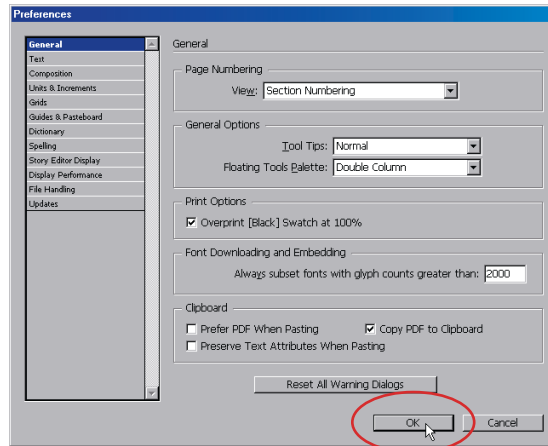
Adobe InDesign CS1 Export Adobe PDF (Windows)



Confirm InDesign CS General Preferences for Print Options:

- Select **Edit > Preferences > General**
- Activate the checkbox for **Overprint [Black] Swatch at 100%**
- Select **OK**

Note: The checkbox for **Overprint** is invoked by default

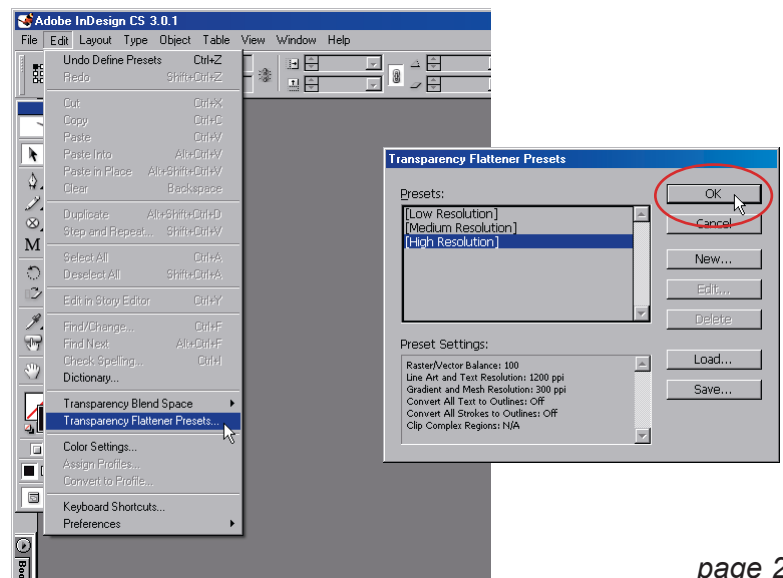


Configure InDesign CS Transparency Blend Space*:

- Select **Edit > Transparency Blend Space > Document CMYK**

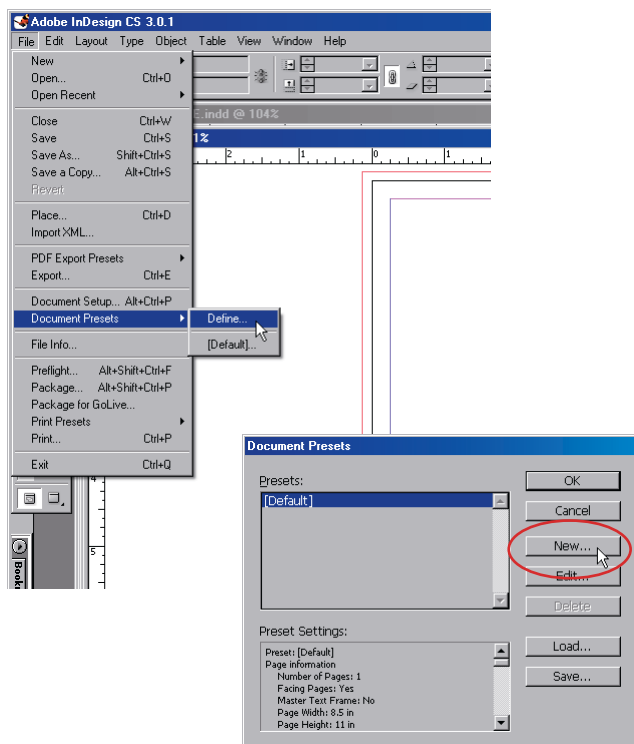
Configure InDesign CS Transparency Flatteners Presets:

- Select **Edit > Transparency Presets...**
- Select **[High Resolution]**
- Select **OK**



*Note: Transparency Blend Space determines the output color space subsequent to flattening for documents containing transparent objects.

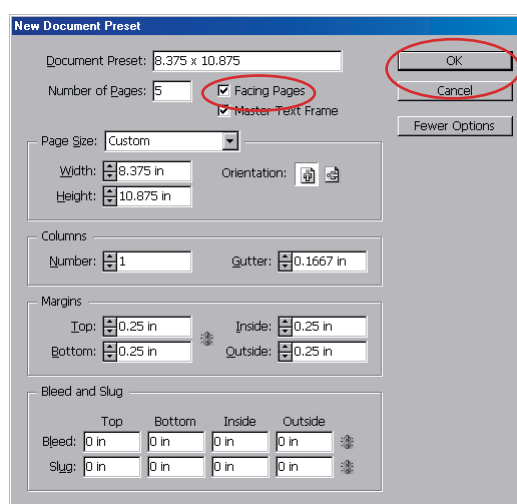
Adobe InDesign CS1 Export Adobe PDF (Windows)



*Note: Repeat to add Document Presets for varying publication specifications

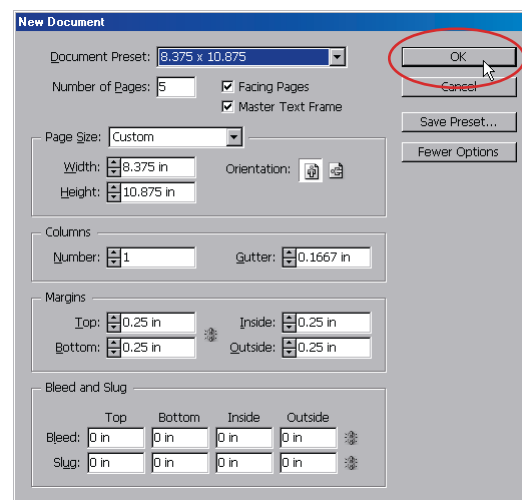
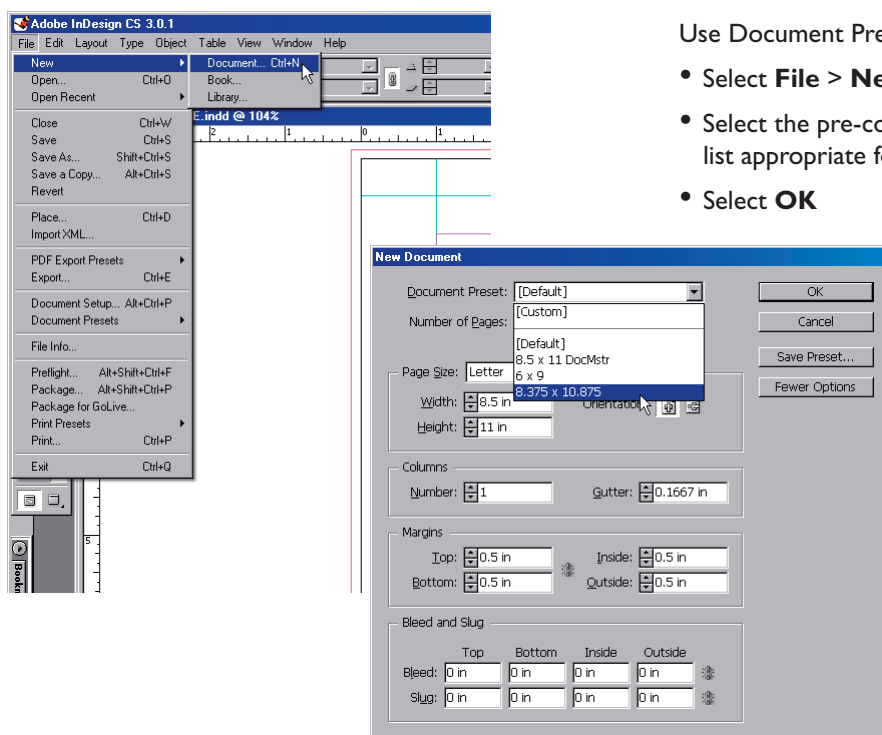
Configure InDesign CS Document Presets:

- Select **File > Document Presets > Define**
- Select **New***
- Assign a **Document Preset** name
- Configure fields for **Page Size**, **Columns**, and **Margins** relative to the specifications for the particular publication
- Select the **Facing Pages** checkbox
- Set Bleed and Slug to **0** for all page sides
- Select **OK**

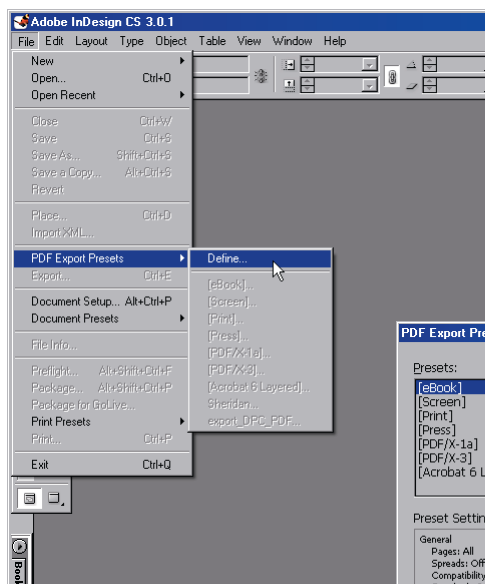


Use Document Presets when creating a new InDesign CS document:

- Select **File > New > Document**
- Select the pre-configured **Document Preset** from the drop-down list appropriate for the particular publication
- Select **OK**

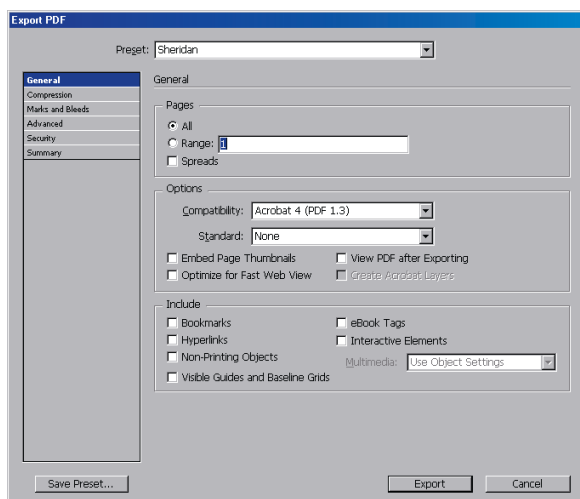
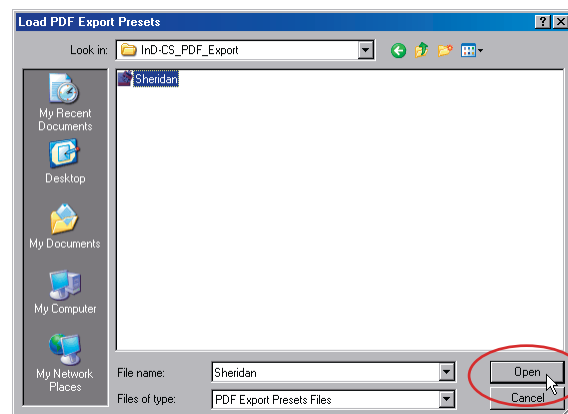
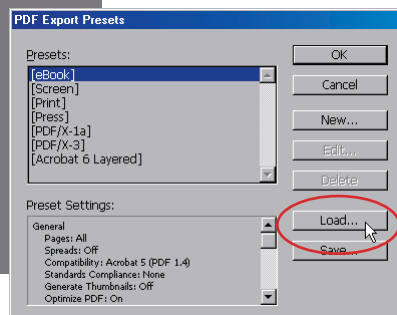


Adobe InDesign CS1 Export Adobe PDF (Windows)



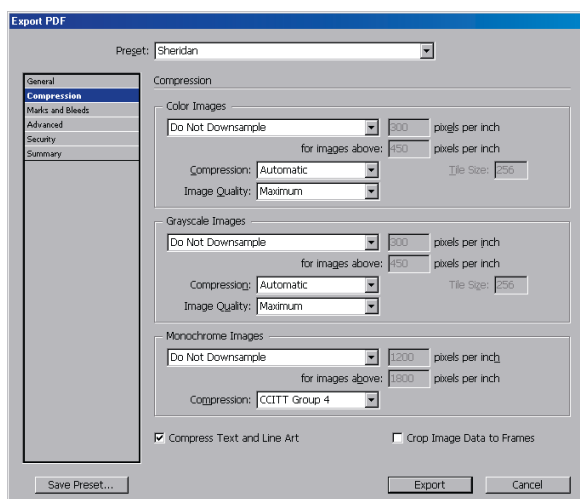
Configure InDesign CS PDF Export Presets:

- Select **File > PDF Export Presets > Define**
- Select **Load**
- Navigate to the folder containing the **Sheridan** PDF Export Preset
- Choose the **Sheridan_IND.pdfs** file and select the **Open** button
- Select **OK**



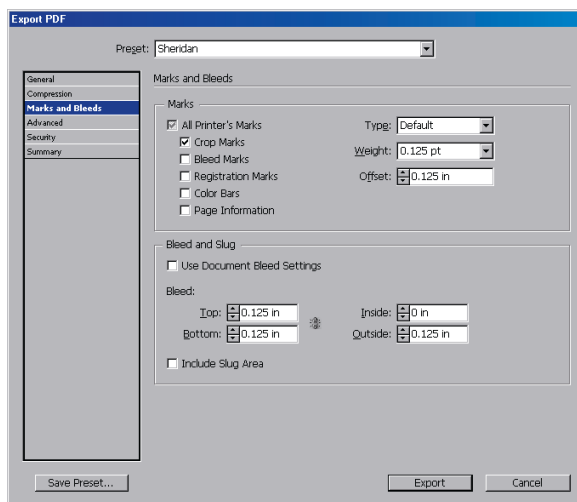
The Sheridan InDesign PDF Export Preset is configured as follows:

Sheridan PDF Export Preset configuration: **General**



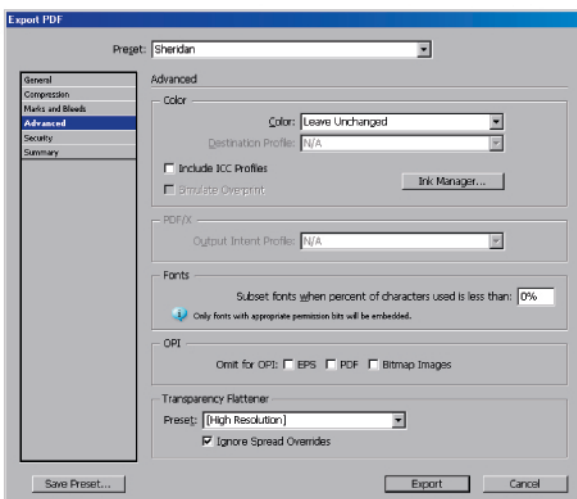
Sheridan PDF Export Preset configuration: **Compression**

Adobe InDesign CS1 Export Adobe PDF (Windows)



Sheridan PDF Export Preset configuration: **Marks and Bleeds**

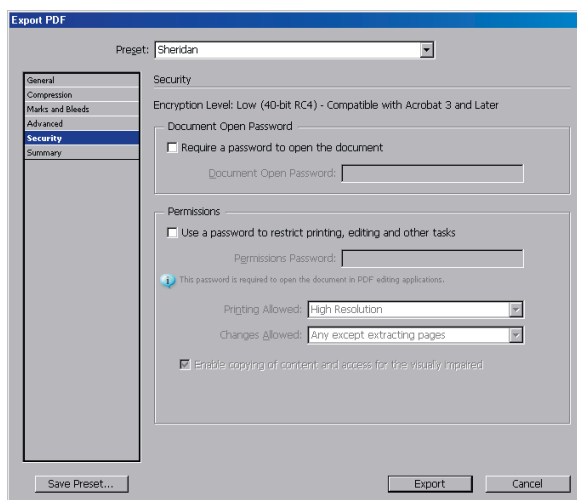
Note: For single-page bleed documents (ad pages), 0.125" (9pt) bleed must be assigned for all page sides.



Sheridan PDF Export Preset configuration: **Advanced**

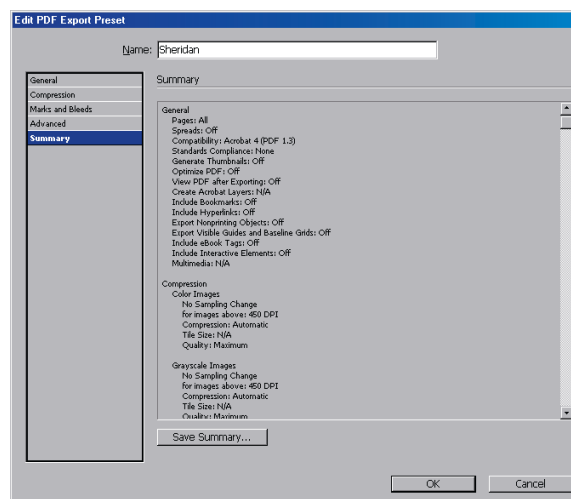
Notes: Alternatively, selecting **CMYK** from the **Color** drop-down list will accomplish color space conversion to CMYK (e.g., for RGB elements) in accordance with configured Color Management settings and designated ICC profiles (PANTONE spot color assignments remain unchanged).

Exporting as Adobe PDF accomplishes font conversion to CID type fonts (composite, Identity-H encoded).



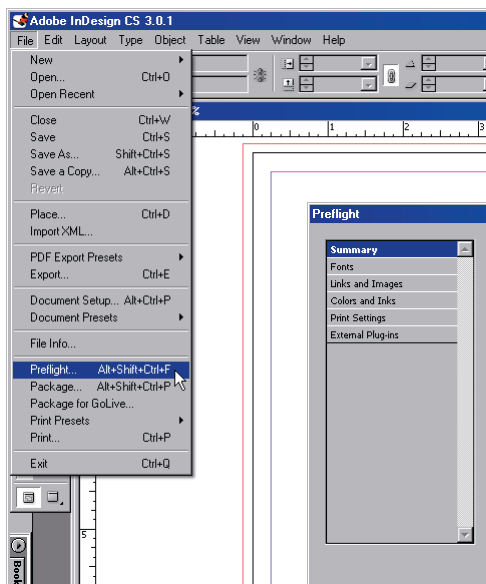
Sheridan PDF Export Preset configuration: **Security**

Sheridan PDF Export Preset configuration: **Summary**



Adobe InDesign CS1 Export Adobe PDF (Windows)

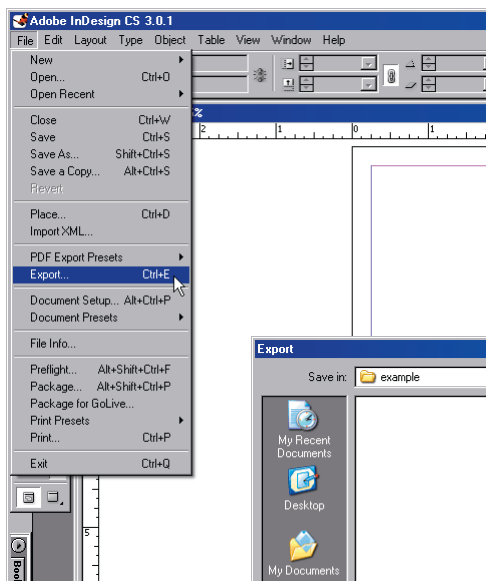
Document Preflight:



- Save the completed InDesign CS document
- Select **File > Preflight**
- Select **Report** to save a copy of the Preflight report

Note: Resolve any reported errors before advancing to PDF Export

Export as Adobe PDF:



- Select **File > Export**
- Navigate to a location for saving the exported PDF file
- Select Save as type: **Adobe PDF**
- Assign a file name
- Select **Save**
- Set the Preset to **Sheridan** and select the **Export** button

