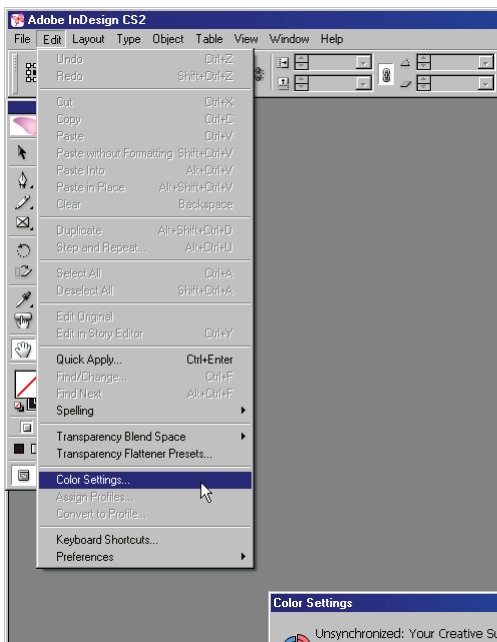


# Adobe InDesign CS2 (Windows) Export Adobe PDF



## Preliminary configuration:



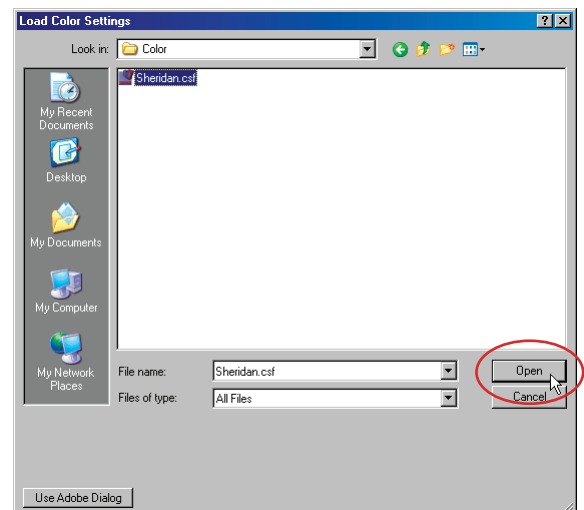
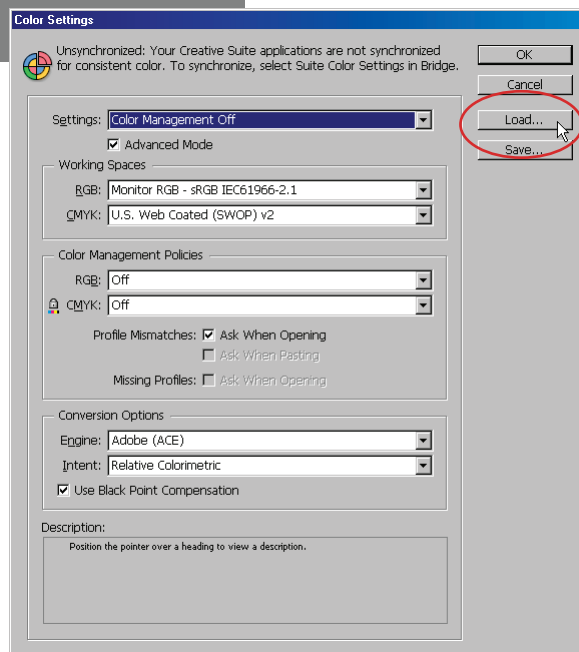
Configure InDesign CS Color Settings:

- Select **Edit > Color Settings**

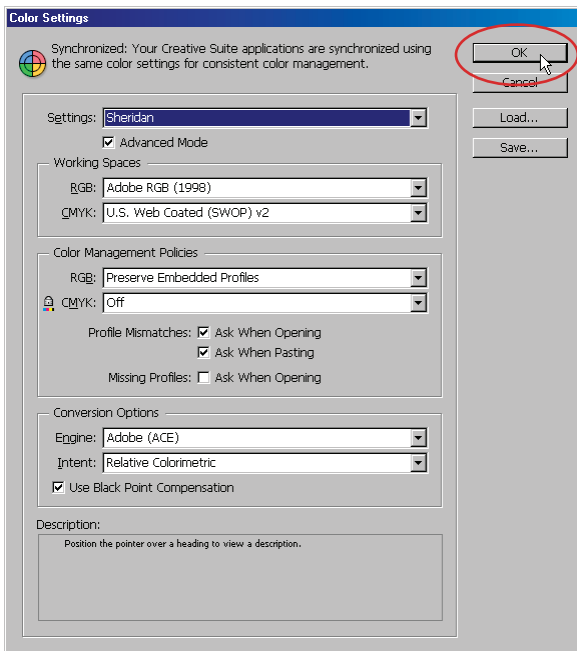
- Select the **Load** button
- Navigate to the folder containing the **Sheridan Color Settings** file\*
- Choose the **Sheridan.csf** file and select the **Open** button

\*Alternatively, prior to loading, the Sheridan.csf file may be located to:

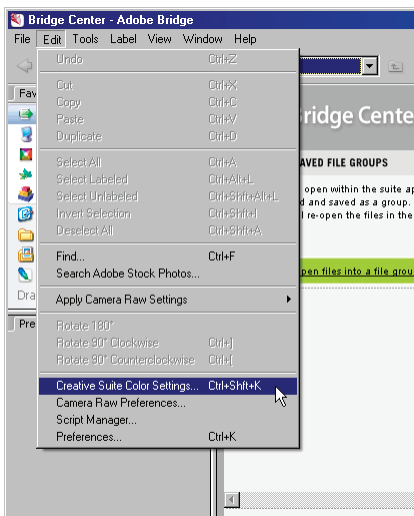
**C:\Documents and Settings\[local PC name]\Application Data\Adobe\Color\Settings\**



# Adobe InDesign CS2 (Windows) Export Adobe PDF

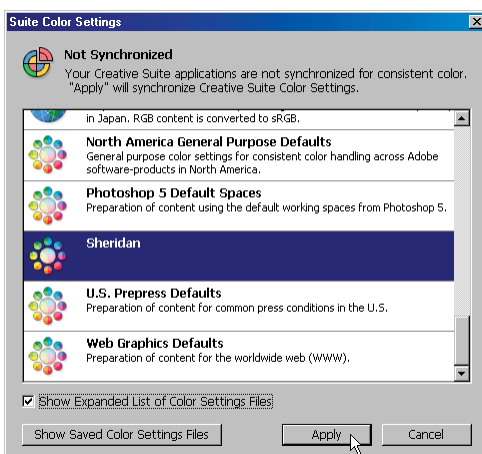


- Select **OK** from the Color Settings dialog window



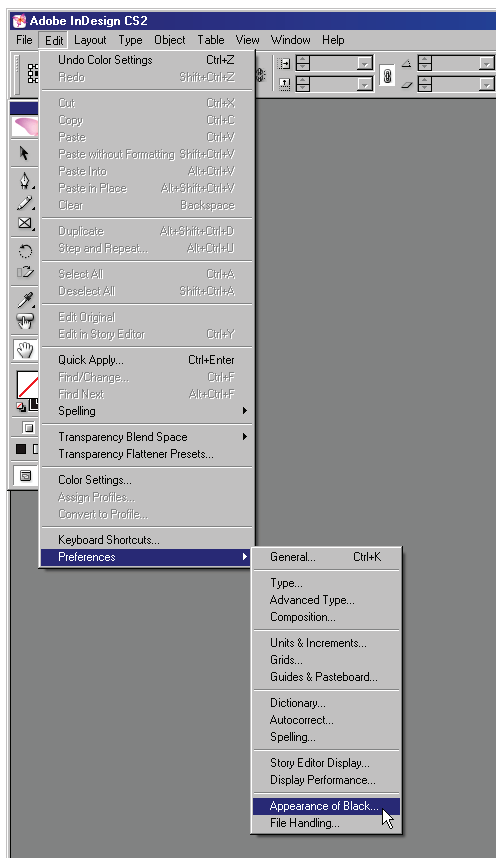
Color Settings can be synchronized with other Adobe CS2 applications:

- Launch Adobe Bridge
- From the Bridge Center menu, select:  
**Edit > Creative Suite Color Settings...**



- Select **Sheridan** from the Suite Color Settings list
- Select the **Apply** button

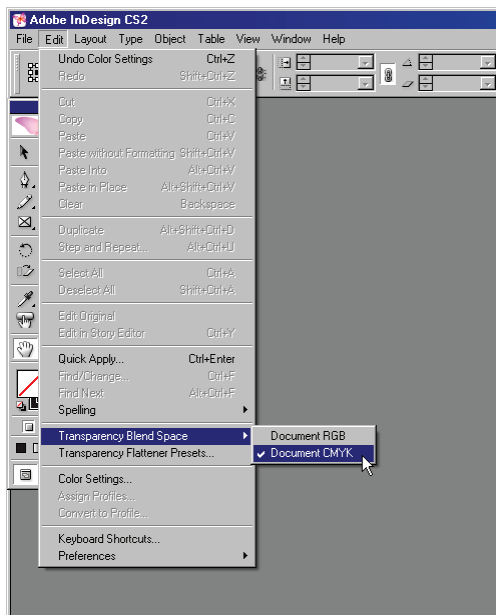
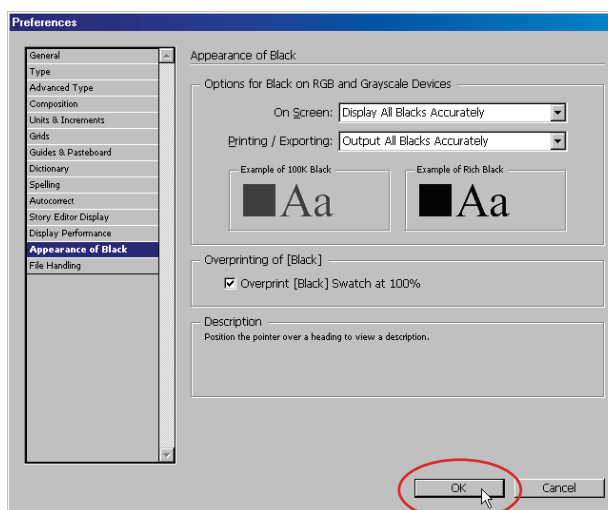
# Adobe InDesign CS2 (Windows) Export Adobe PDF



Confirm InDesign CS2 Preferences for Appearance of Black:

- Select **Edit > Preferences > Appearance of Black...**
- Select **Display All Blacks Accurately** for On Screen
- Select **Output All Blacks Accurately** for Printing/Exporting
- Activate the checkbox for **Overprint [Black] Swatch at 100%**
- Select **OK**

Note: The checkbox for **Overprint** is invoked by default

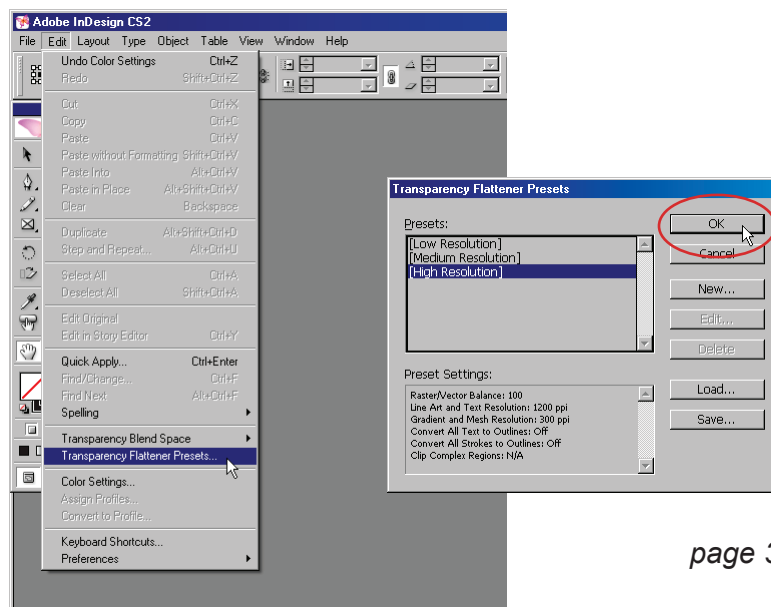


Configure InDesign CS Transparency Blend Space\*:

- Select **Edit > Transparency Blend Space > Document CMYK**

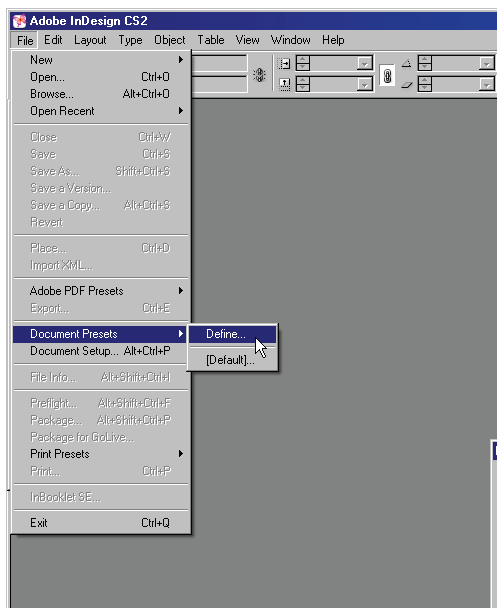
Configure InDesign CS Transparency Flattener Presets:

- Select **Edit > Transparency Flattener Presets...**
- Select **[High Resolution]**
- Select **OK**



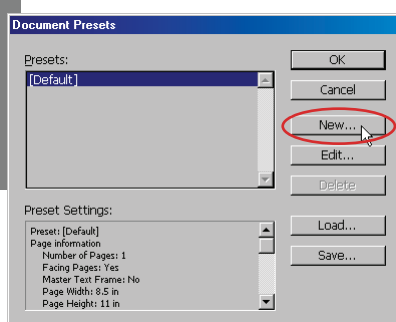
\*Note: Transparency Blend Space determines the output color space subsequent to flattening for documents containing transparent objects.

# Adobe InDesign CS2 (Windows) Export Adobe PDF

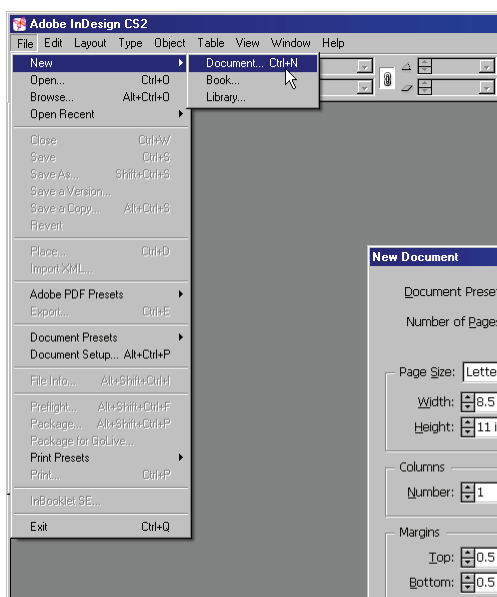
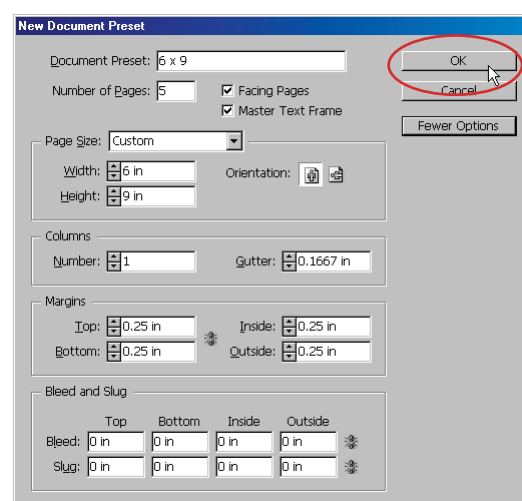


Configure InDesign CS Document Presets:

- Select **File > Document Presets > Define**
- Select **New\***
- Assign a **Document Preset** name
- Configure fields for **Page Size**, **Columns**, and **Margins** relative to the specifications for the particular publication
- Select the **Facing Pages** checkbox
- Set Bleed and Slug to **0** for all page sides
- Select **OK**

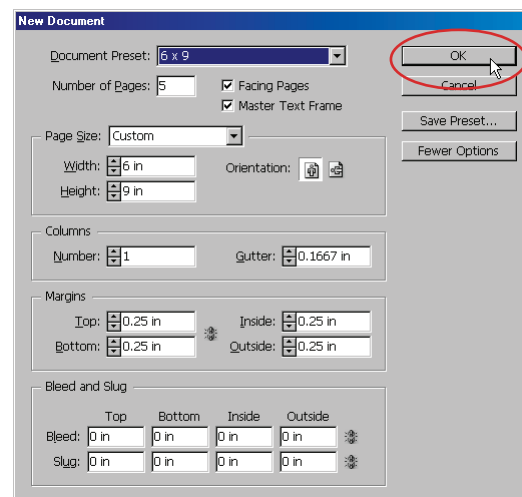
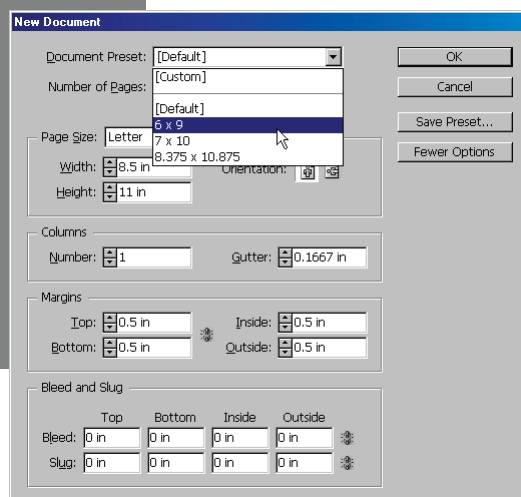


\*Note: Repeat to add Document Presets for varying publication specifications

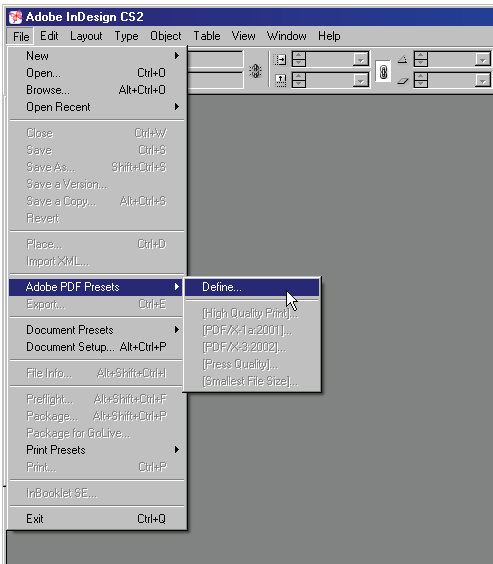


Use Document Presets when creating a new InDesign CS document:

- Select **File > New > Document**
- Select the pre-configured **Document Preset** from the drop-down list appropriate for the particular publication
- Select **OK**

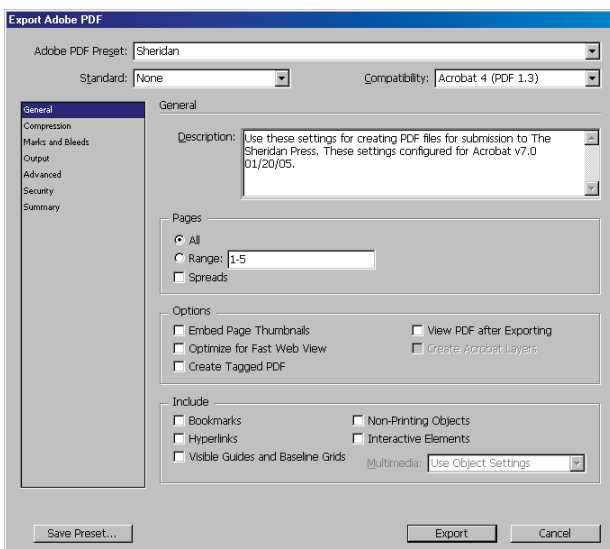
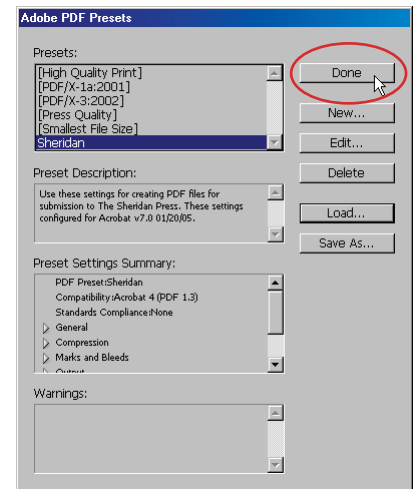
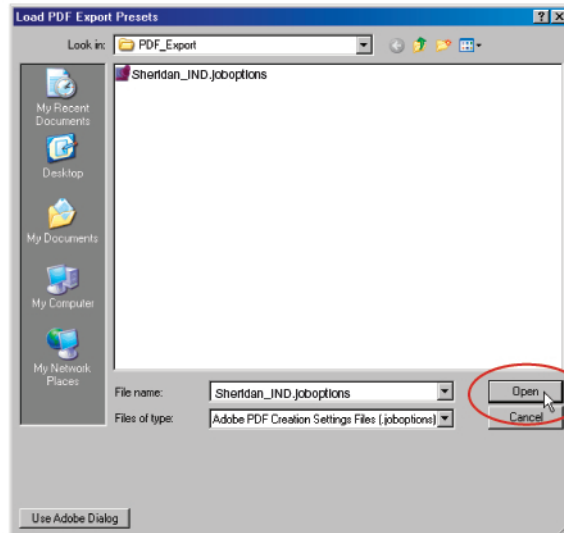
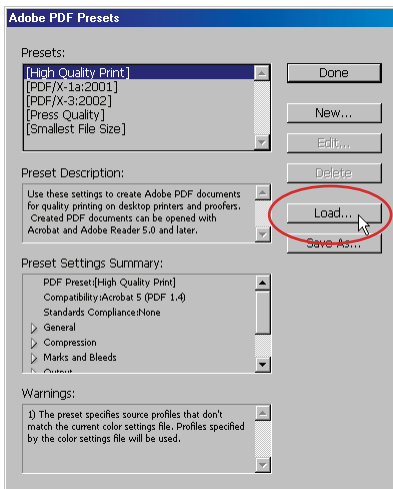


# Adobe InDesign CS2 (Windows) Export Adobe PDF



Configure InDesign CS PDF Export Presets:

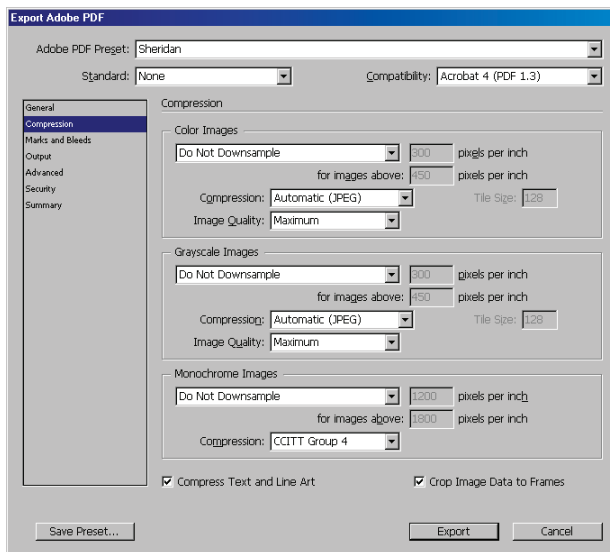
- Select **File > Adobe PDF Presets > Define**
- Select **Load**
- Navigate to the folder containing the **Sheridan Adobe PDF Preset**
- Choose the **Sheridan\_IND.joboptions** file and select the **Open** button
- Select **Done**



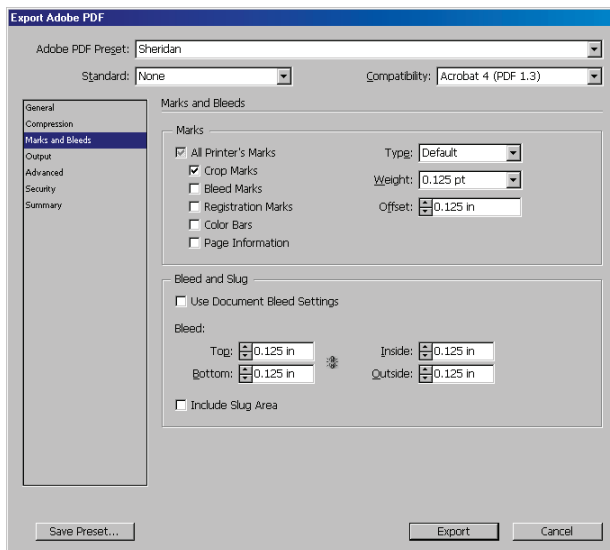
The Sheridan InDesignCS2 Adobe PDF Preset is configured as follows:

Sheridan Adobe PDF Preset configuration: **General**

# Adobe InDesign CS2 (Windows) Export Adobe PDF

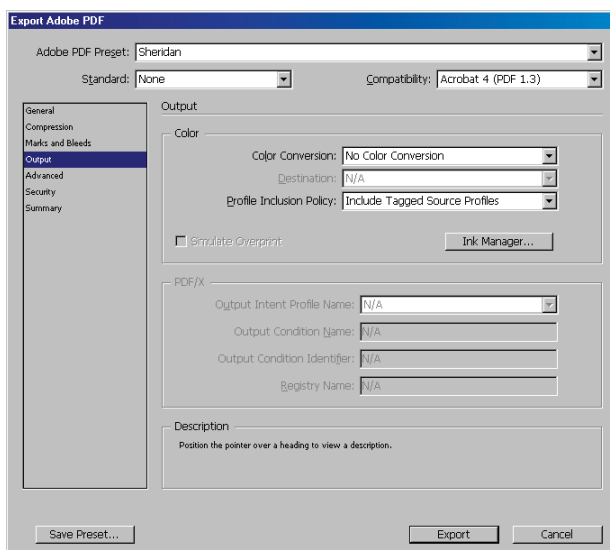


Sheridan Adobe PDF Preset configuration: **Compression**



Sheridan Adobe PDF Preset configuration: **Marks and Bleeds**

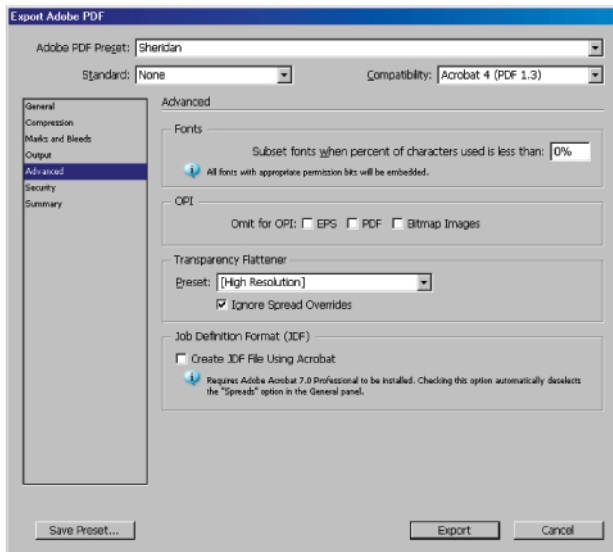
**Note:** For single-page bleed documents (i.e., ad pages), 0.125" (9pt) bleed must be assigned for all page sides.



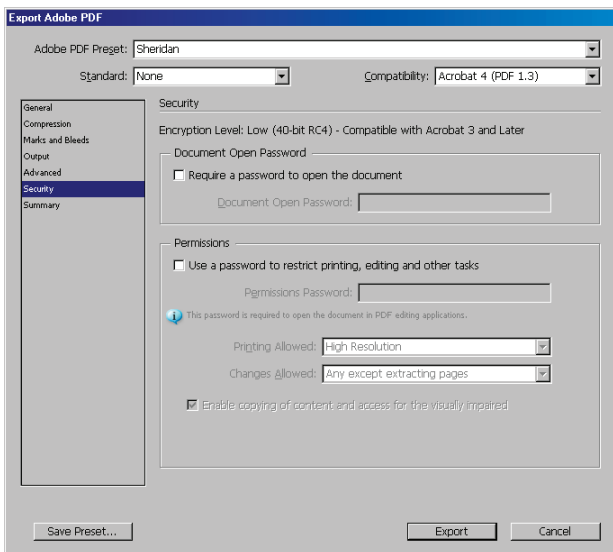
Sheridan Adobe PDF Preset configuration: **Output**

**Note:** Alternatively, selecting **Convert to Destination (Preserve Numbers)** from the **Color Conversion** drop-down list will accomplish color space conversion to CMYK (e.g., for RGB elements) in accordance with configured Color Management settings and designated ICC profiles (PANTONE spot color assignments remain unchanged).

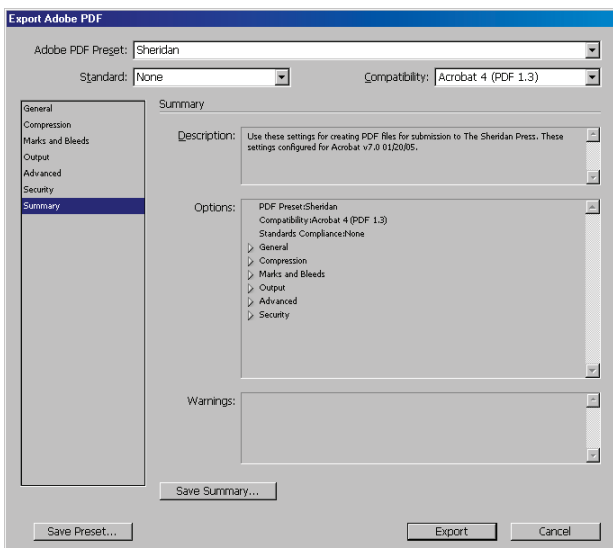
# Adobe InDesign CS2 (Windows) Export Adobe PDF



Sheridan Adobe PDF Preset configuration: **Advanced**

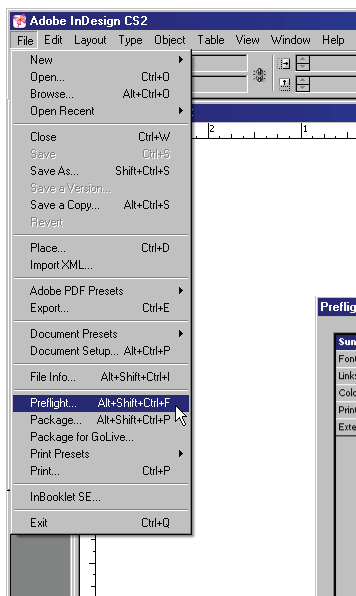


Sheridan Adobe PDF Preset configuration: **Security**

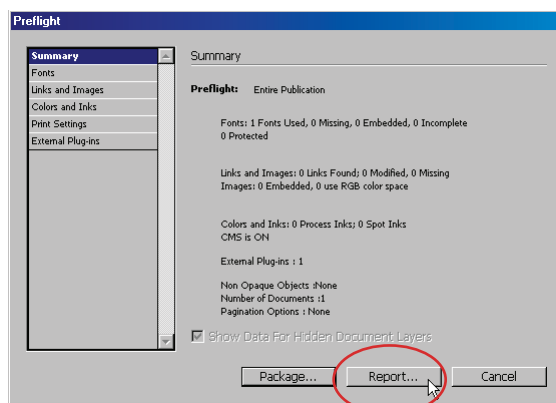


Sheridan Adobe PDF Preset configuration: **Summary**

# Adobe InDesign CS2 (Windows) Export Adobe PDF

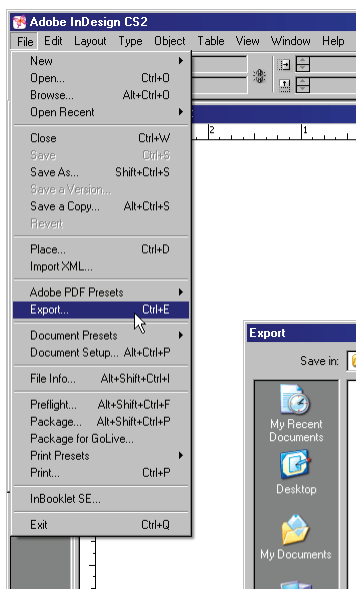


- Save the completed InDesign CS document
- Select **File > Preflight**
- Select **Report** to save a copy of the Preflight report



Note: Resolve any reported errors before advancing to PDF Export

## Export as Adobe PDF:



- Select **File > Export**
- Navigate to a location for saving the exported PDF file
- Select Save as type: **Adobe PDF**
- Assign a file name
- Select **Save**
- Set the Preset to **Sheridan** and select the **Export** button

