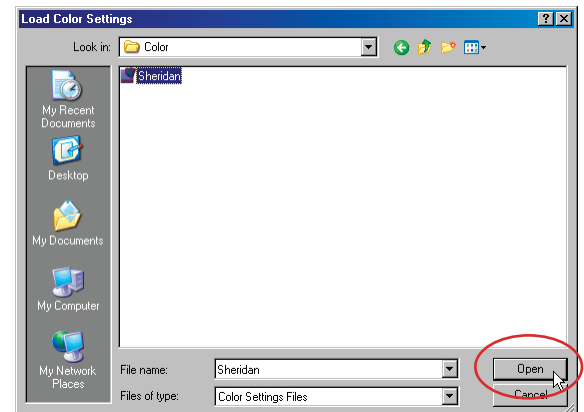
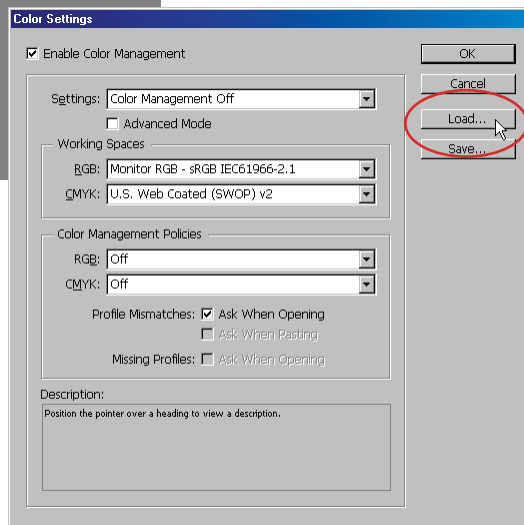
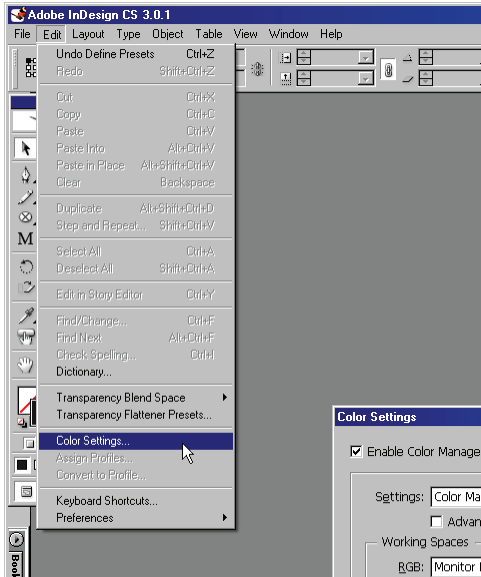


SHERIDAN IND CS3-CS6 GUIDELINES

Preliminary configuration:

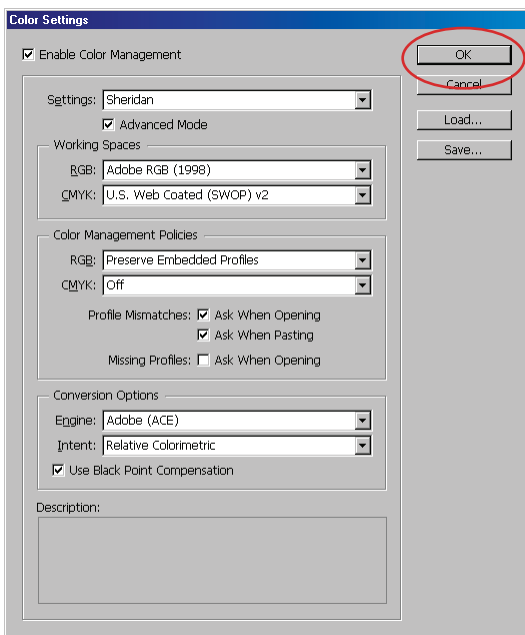


Configure InDesign Color Settings:

- Select **Edit > Color Settings**
- Activate the checkbox for **Enable Color Management**
- Select the **Load** button
- Navigate to the folder containing the **Sheridan** Color Settings file*
- Choose the **Sheridan.csf** file and select the **Open** button

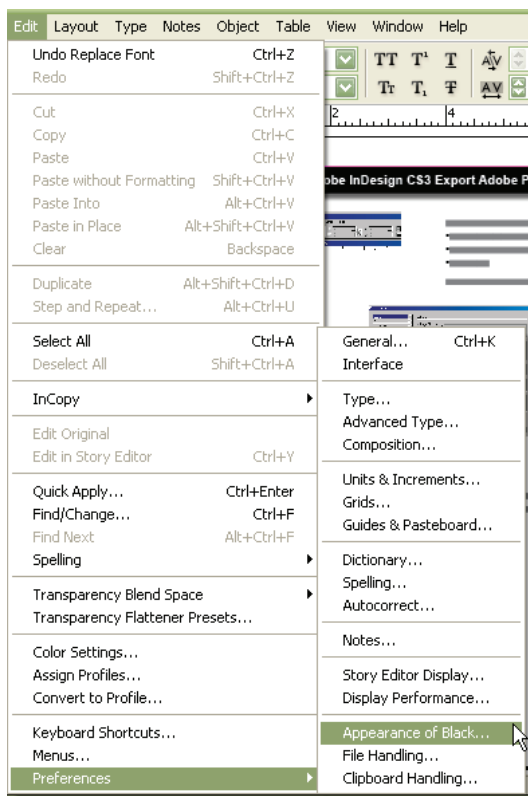
*Alternatively, prior to loading, the Sheridan.csf file may be located to:

C:\Program Files\Common Files\Adobe\Color\Settings



- Select **OK** from the Color Settings dialog window

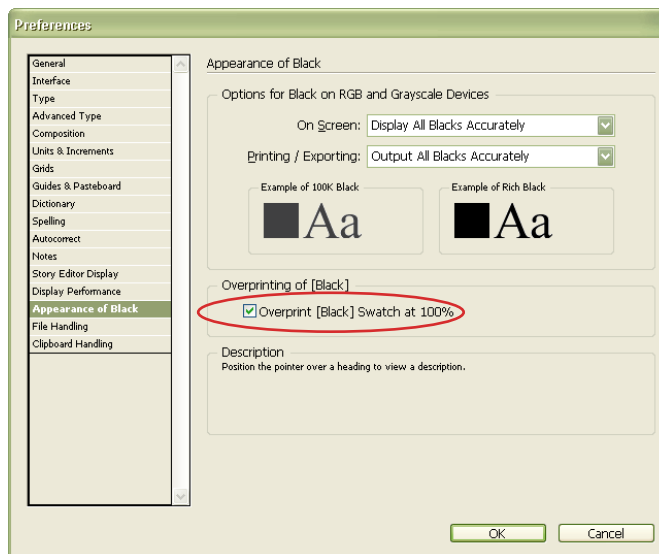
SHERIDAN IND CS3-CS6 GUIDELINES



Confirm InDesign General Preferences for Print Options:

- Select **Edit > Preferences > General > Appearance of Black**
- Activate the checkbox for **Overprint [Black] Swatch at 100%**
- Select **OK**

Note: The checkbox for **Overprint** is invoked by default



Configure InDesign Transparency Blend Space*:

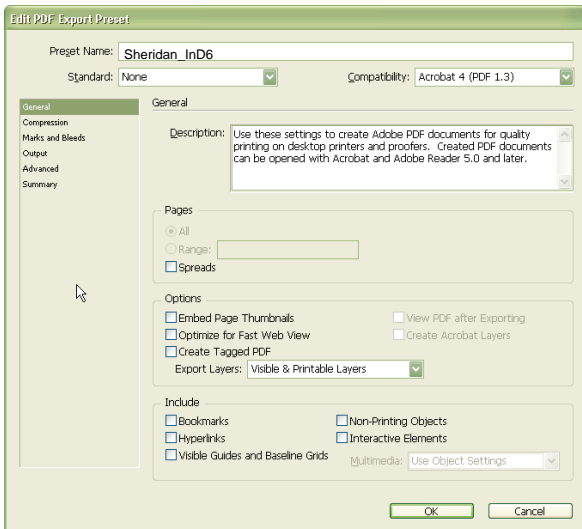
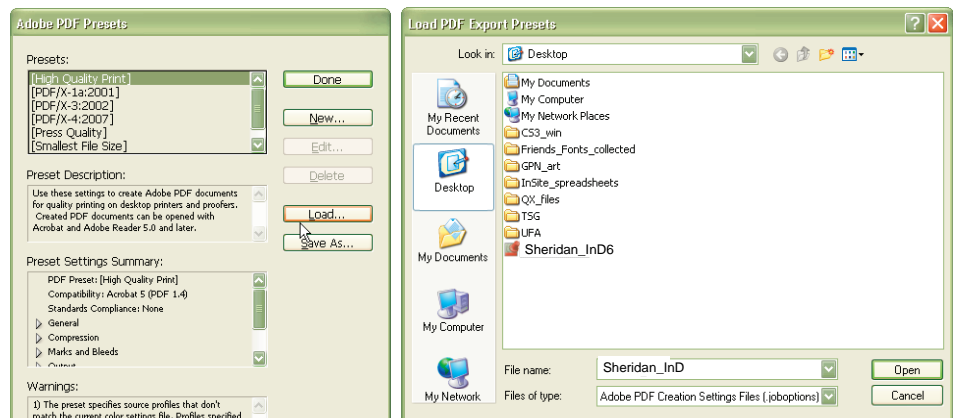
- Select **Edit > Transparency Blend Space > Document CMYK**

*Note: Transparency Blend Space determines the output color space subsequent to flattening for documents containing transparent objects.

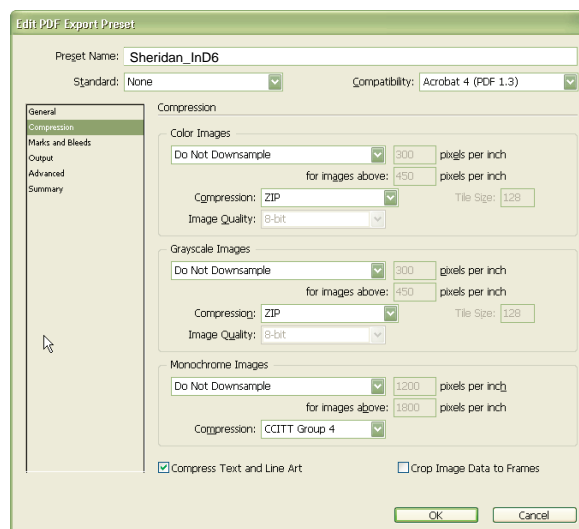
SHERIDAN IND CS3-CS6 GUIDELINES

Configure InDesign PDF Export Presets:

- Select **File > Adobe PDF Presets > Define**
- Select **Load**
- Navigate to the folder containing the **Sheridan_InD6** PDF Export Preset
- Choose the **Sheridan_InD6.joboptions** file and select the **Open** button
- Select **OK**



Sheridan PDF Export Preset configuration: **Compression**



SHERIDAN IND CS3-CS6 GUIDELINES

Edit PDF Export Preset

Preset Name:

Standard: Compatibility:

Marks and Bleeds

Marks

☒ All Printer's Marks Type:

☒ Crop Marks Weight:

☐ Bleed Marks Offset:

☐ Registration Marks

☐ Color Bars

☐ Page Information

Bleed and Slug

☐ Use Document Bleed Settings

Bleed:

Top: Inside:

Bottom: Outside:

☐ Include Slug Area

OK Cancel

Sheridan PDF Export Preset configuration: **Marks and Bleeds**

Note: For single-page bleed documents (ad pages), 0.125" (9pt) bleed must be assigned for all page sides as shown.

For spread documents, change the inside bleed to be 0p0.

Edit PDF Export Preset

Preset Name:

Standard: Compatibility:

Output

Color

Color Conversion:

Destination:

Profile Inclusion Policy:

☐ Simulate Overprint

PDF/X

Output Intent Profile Name:

Output Condition Name:

Output Condition Identifier:

Registry Name:

Description

Position the pointer over a heading to view a description.

OK Cancel

Sheridan PDF Export Preset configuration: **Output**

Edit PDF Export Preset

Preset Name:

Standard: Compatibility:

Advanced

Fonts

Subset fonts when percent of characters used is less than:

All fonts with appropriate embedding bits will be embedded.

OPI

Omit for OPI: ☐ EPS ☐ PDF ☐ Bitmap Images

Transparency Flattener

Preset:

☒ Ignore Spread Overrides

Job Definition Format (JDF)

☐ Create JDF File Using Acrobat

Requires Adobe Acrobat 7.0 Professional or later to be installed. Checking this option automatically selects the "Spreads" option in the General panel.

OK Cancel

Sheridan PDF Export Preset configuration: **Advanced**

Export as Adobe PDF:

- Select **File > Export**
- Navigate to a location for saving the exported PDF file
- Select Save as type: **Adobe PDF**
- Assign a file name
- Select **Save**
- Set the Preset to **Sheridan_InD6** and select the **Export** button

